



PARTS CATALOGUE

AL115FGC (2BJ1) INDONESIA



1M2BJ-460E1

()

AL115FGC
PARTS CATALOGUE
©2013 by Yamaha Motor Co., Ltd.
1st edition, March 2013
All rights reserved.
Any reprinting or unauthorized use
without the written permission of
Yamaha Motor Co., Ltd.
is expressly prohibited.
Printed in Japan.

FOREWORD

This Parts Catalogue is related to the parts for the model(s) on the cover page. When you are ordering replacement parts, please refer to this Parts Catalogue and quote both part numbers and part names correctly.

1. Modifications or additions which have been made after the issue of the Parts Catalogue will be announced in the Parts News.

It is advisable that you make the necessary corrections to the Parts Catalogue according to the Parts News.

2. Abbreviations

The following abbreviations are used in this Parts Catalogue.

“UR” Use specified parts number.

“UN” Use as many as needed.

“AP” Alternate Parts

“LM” Locally Made (Parts need to be ordered locally)

“F#” Frame No. (Applicable machine No.)

“O/S” Over Size

3. The number of components for assembly

- Parts, which are to be supplied in an assembly, are listed with a dot (.) in front of the part name as shown below.
- The numeral appearing to the right of each component part indicates the quantity of parts for each assembly unit.

PART NO.	DESCRIPTION	Q'TY	REMARKS
2F5-83310-60	FRONT FLASHER LIGHT ASSY	2	
115-83311-60	.BULB (6V-18W)	1	

4. Applicable colours of graphics are represented in the “REMARKS” as shown below.

PART NO.	DESCRIPTION	Q'TY	REMARKS
2N4-24110-00-X5	FUEL TANK COMP.	2	MXR
3J1-24240-10	.GRAPHIC, FUEL TANK	1	FOR MXR

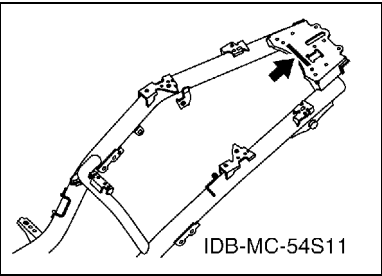
5. Note that the illustrations for reference in finding parts numbers are not to be used for assembling. When assembling, please use the applicable service manual.

6. The asterisk (*) before a reference number indicates modified items after the first edition.

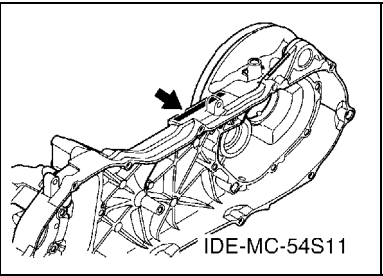
FOREWORD

7. Applicable Serial No.

Frame Serial No.



Engine Serial No.



8. Applicable Colour Code (The (*) mark shows Model colour.)

Abbreviation	Colour Name	Colour Code
RM7(*)	RED METALLIC 7	1218
SL	SILVER	0035
SMX(*)	BLACK METALLIC X	0903
WM6(*)	WHITE METALLIC 6	1124

9. Applicable Starting Serial No.

Frame Serial No.

Serial No.	Name Of Q'ty Column	Model Code

Engine Serial No.

Serial No.	Name Of Q'ty Column	Model Code

CONTENTS

ENGINE

CYLINDER	1
CRANKSHAFT & PISTON	2
VALVE	3
CAMSHAFT & CHAIN	4
OIL PUMP	5
AIR SHROUD & FAN	6
INTAKE	7
EXHAUST	9
CRANKCASE	10
CRANKCASE COVER 1	12
STARTER	13
CLUTCH	14
TRANSMISSION	16

CHASSIS

FRAME	17
FENDER	18
SIDE COVER	19
REAR ARM & SUSPENSION	21
STEERING	22
FUEL TANK	24
SEAT	25
FRONT WHEEL FOR CAST WHEEL	27
FRONT BRAKE CALIPER	28
REAR WHEEL FOR CAST WHEEL	29
STEERING HANDLE & CABLE	30
FRONT MASTER CYLINDER	32
STAND & FOOTREST	33
LEG SHIELD	35
GENERATOR	37
STARTING MOTOR	38
FLASHER LIGHT	39
METER	40
HEADLIGHT	41
TAILLIGHT	42
HANDLE SWITCH & LEVER	43
ELECTRICAL 1	44
ELECTRICAL 2	45
OPTIONAL PARTS 1	46

INDEX

NUMERICAL INDEX	48
-----------------------	----

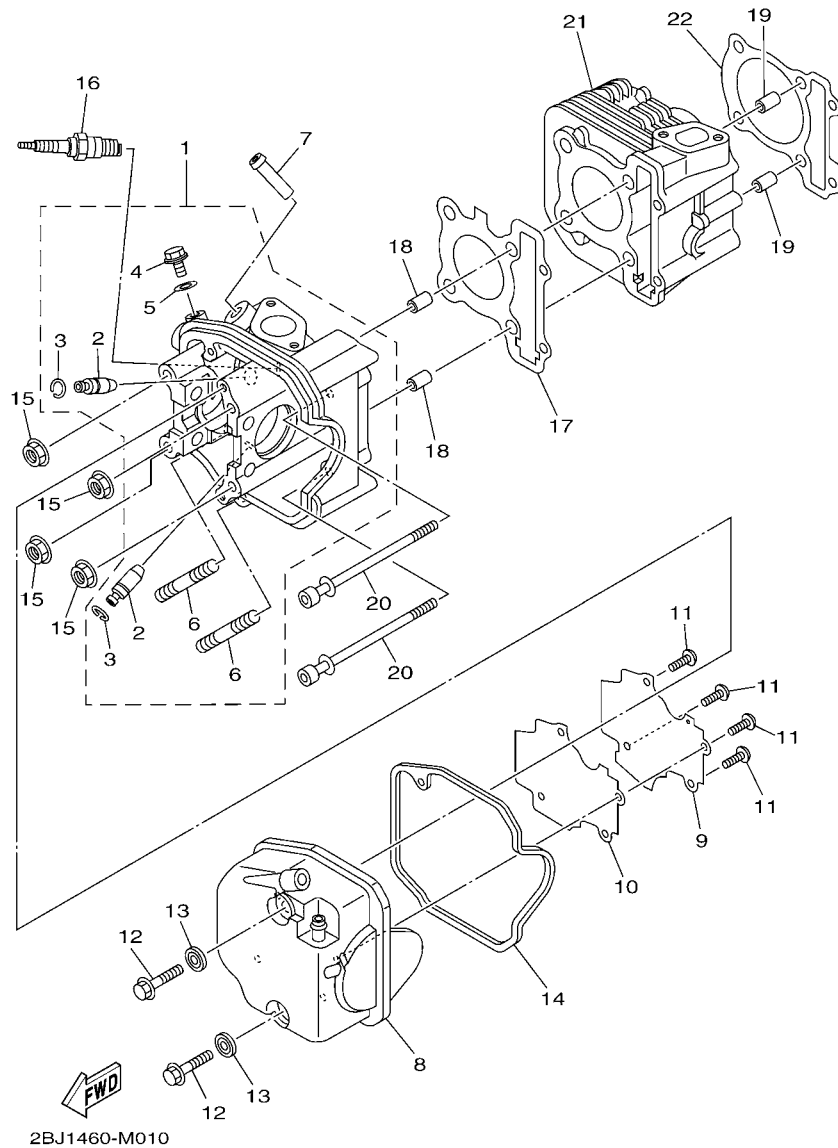


FIG. 1 CYLINDER

REF. NO.	PART NO.	DESCRIPTION	2B/J1				REMARKS
1	54P-E1102-00	CYLINDER HEAD ASSY	1				
2	54P-E1133-10	.GUIDE, VALVE 1	2				
3	93440-10085	.CIRCLIP	2				
4	95022-06010	BOLT, FLANGE	1				
5	90430-06014	GASKET	1				
6	95612-08618	BOLT, STUD	2				
7	54P-E1111J-00	PIPE 1	1				
8	54P-E1191-00	COVER, CYLINDER HEAD 1	1				
9	54P-E1165-00	PLATE, BREATHER	1				
10	54P-E1169-00	GASKET, BREATHER COVER	1				
11	90149-05801	SCREW	4				
12	95812-06030	BOLT, FLANGE	2				
13	1LB-E1173-00	WASHER, SEALING	2				
14	54P-E1193-00	GASKET, HEAD COVER 1	1				
15	90179-08518	NUT	4				
16	94700-00880	PLUG, SPARK (NGK CR6HSA)	1				UR
	94700-00895	PLUG, SPARK (ND U20FSR-U)	1				UR
17	54P-E1181-00	GASKET, CYLINDER HEAD 1	1				
18	91810-14809	PIN, DOWEL	2				
19	91810-14809	PIN, DOWEL	2				
20	90110-06868	BOLT, HEXAGON SOCKET HEAD	2				
21	54P-E1311-10	CYLINDER 1	1				
22	54P-E1351-00	GASKET, CYLINDER	1				



REF. NO.	PART NO.	DESCRIPTION	2B31				REMARKS
1	54P-E1400-10	CRANKSHAFT ASSY	1				
2	5MX-E1681-10	.PIN, CRANK 1	1				
3	93310-528Y8	.BEARING	1				
4	5D9-E1651-00	.ROD, CONNECTING	1				
5	54P-E1422-00	.CRANK 2	1				
6	5LW-E3452-00	.COVER, ROTOR FILTER	1				
7	93306-372X2	.BEARING	1				
8	5TL-E3324-00	.GEAR, PUMP DRIVE	1				
9	90280-03017	KEY, WOODRUFF	1				
10	54P-E1631-00	PISTON (STD)	1				
11	54P-E1633-00	PIN, PISTON	1				
12	93450-14088	CIRCLIP	2				
13	54P-E1603-00	PISTON RING SET (STD)	1				
14	54P-E1445-00	SPACER	1				UR
	54P-E1445-10	SPACER	1				UR



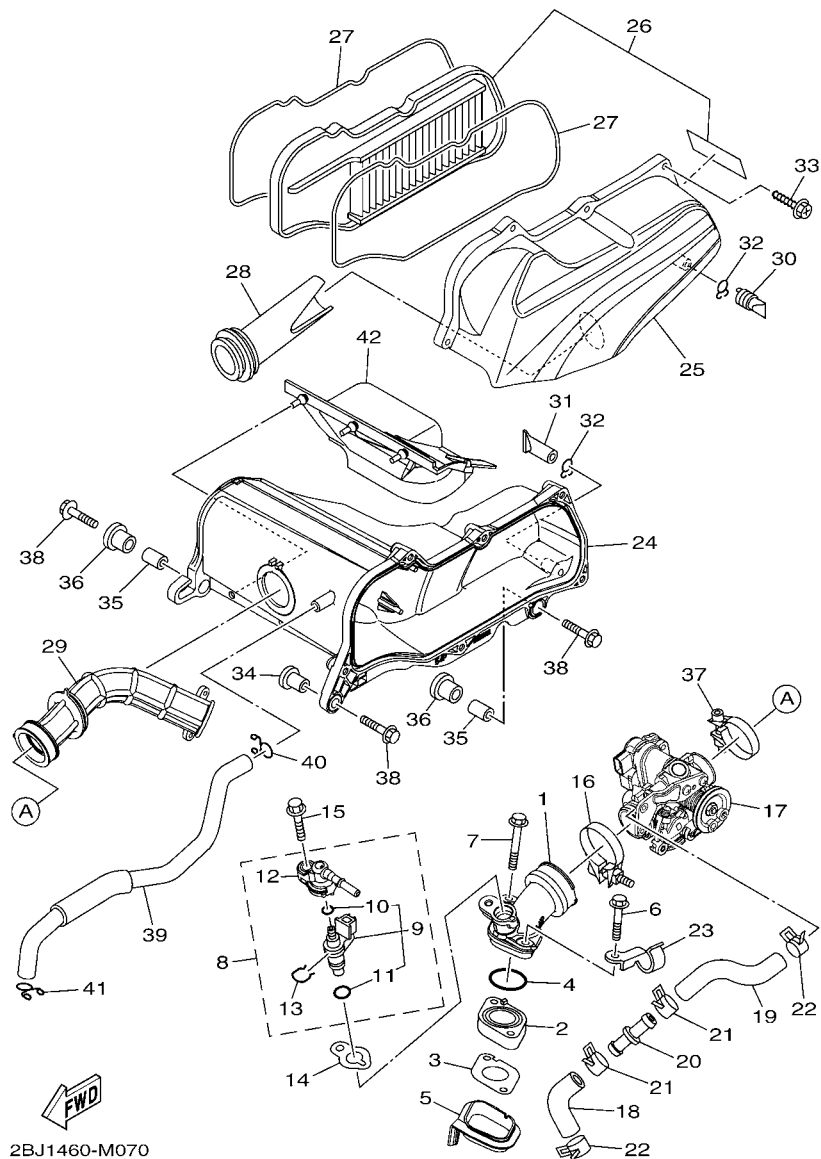


FIG. 7 INTAKE

REF. NO.	PART NO.	DESCRIPTION	2BJ1				REMARKS
1	54P-E3585-00	MANIFOLD	1				
2	54P-E3595-00	JOINT	1				
3	54P-E3556-10	GASKET, MANIFOLD	1				
4	93210-30611	O-RING	1				
5	54P-E3593-00	DAMPER	1				
6	95812-06035	BOLT, FLANGE	1				
7	95812-06050	BOLT, FLANGE	1				
8	54P-E3770-10	INJECTOR ASSY	1				
9	54P-E3761-10	.INJECTOR	1				
10	54P-E4147-00	..O-RING	1				
11	5CA-E4147-00	..O-RING	1				
12	54P-E3938-00	.PIPE	1				
13	54P-E4137-00	.CLIP	1				
14	54P-E3557-00	GASKET	1				
15	95812-06025	BOLT, FLANGE	1				
16	54P-E3474-00	BAND	1				
17	54P-E3750-10	THROTTLE BODY ASSY	1				
18	54P-E3892-00	HOSE, AIR 2	1				
19	54P-E3895-00	HOSE, AIR	1				
20	54P-E3815-00	JOINT 1	1				
21	90467-15804	CLIP	2				
22	90467-15804	CLIP	2				
23	54P-E4146-00	PLATE	1				
24	54P-E4411-10	CASE, AIR CLEANER 1	1				
25	54P-E4412-10	CAP, CLEANER CASE 1	1				
26	54P-WE445-10	AIR CLEANER ELEMENT ASSY	1				
27	54P-E4452-10	SEAL	2				

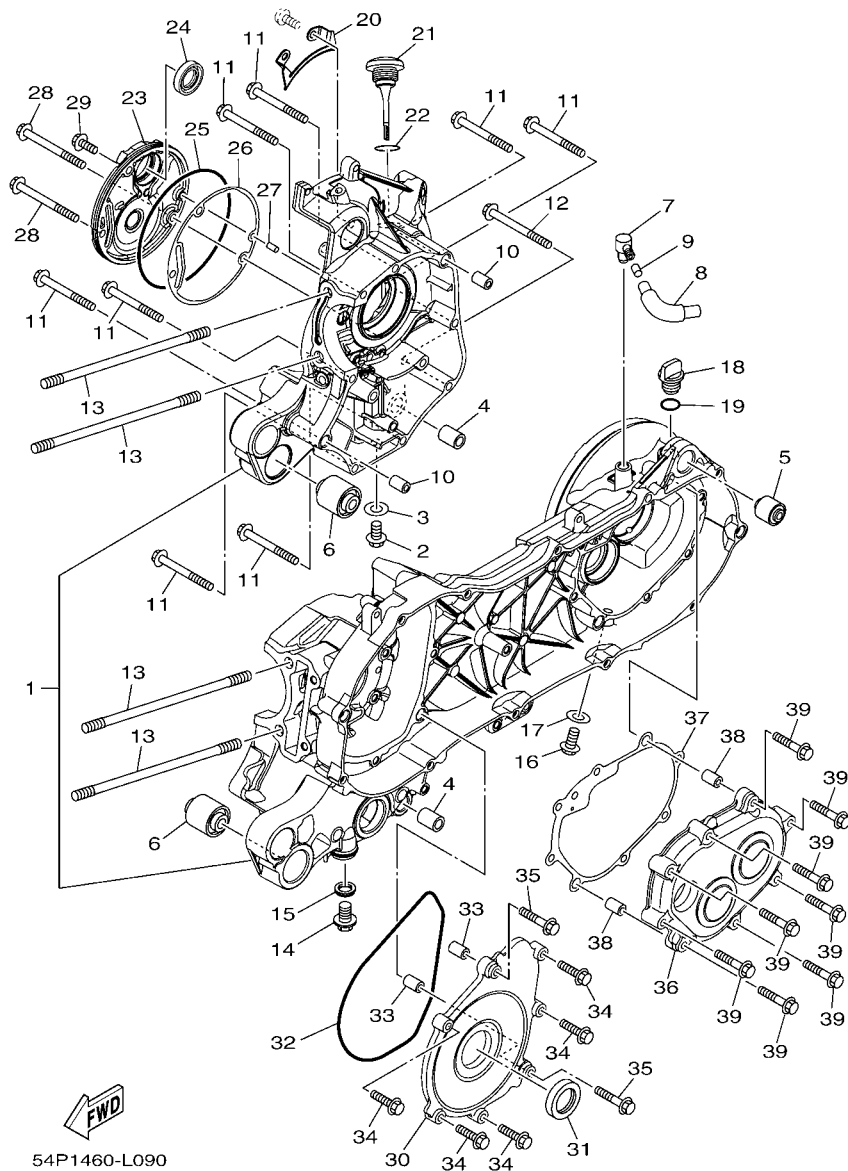


FIG. 9 CRANKCASE

REF. NO.	PART NO.	DESCRIPTION	2BU1				REMARKS
1	54P-E5150-10	CRANKCASE ASSY	1				
2	95022-08012	BOLT, FLANGE	1				
3	90430-08119	GASKET	1				
4	54P-F7121-00	BUSH	2				
5	5MX-F2216-00	BUSH, REAR SHOCK ABSORBER	1				
6	90388-10805	DAMPER	2				
7	54P-E5371-00	BREATHER	1				
8	54P-E5373-00	PIPE, BREATHER	1				
9	14D-E5408-00	ELEMENT 2	1				
10	91810-14809	PIN, DOWEL	2				
11	95022-06060	BOLT, FLANGE	8				
12	95022-06070	BOLT, FLANGE	1				
13	90116-08843	BOLT, STUD	4				
14	90340-12808	PLUG, STRAIGHT SCREW	1				
15	4YS-E1198-00	GASKET	1				
16	95812-08016	BOLT, FLANGE	1				
17	90430-08119	GASKET	1				
18	5LW-E5363-00	PLUG, OIL	1				
19	93210-148H8	O-RING	1				
20	54P-E5113-00	PLATE	1				
21	54P-E5362-00	PLUG, OIL LEVEL	1				
22	5LW-E3769-00	O-RING	1				
23	54P-E5417-00	COVER, CAP	1				
24	93102-19814	OIL SEAL	1				
25	93211-07800	O-RING	1				
26	54P-E5453-00	GASKET	1				
27	99480-05010	PIN	1				

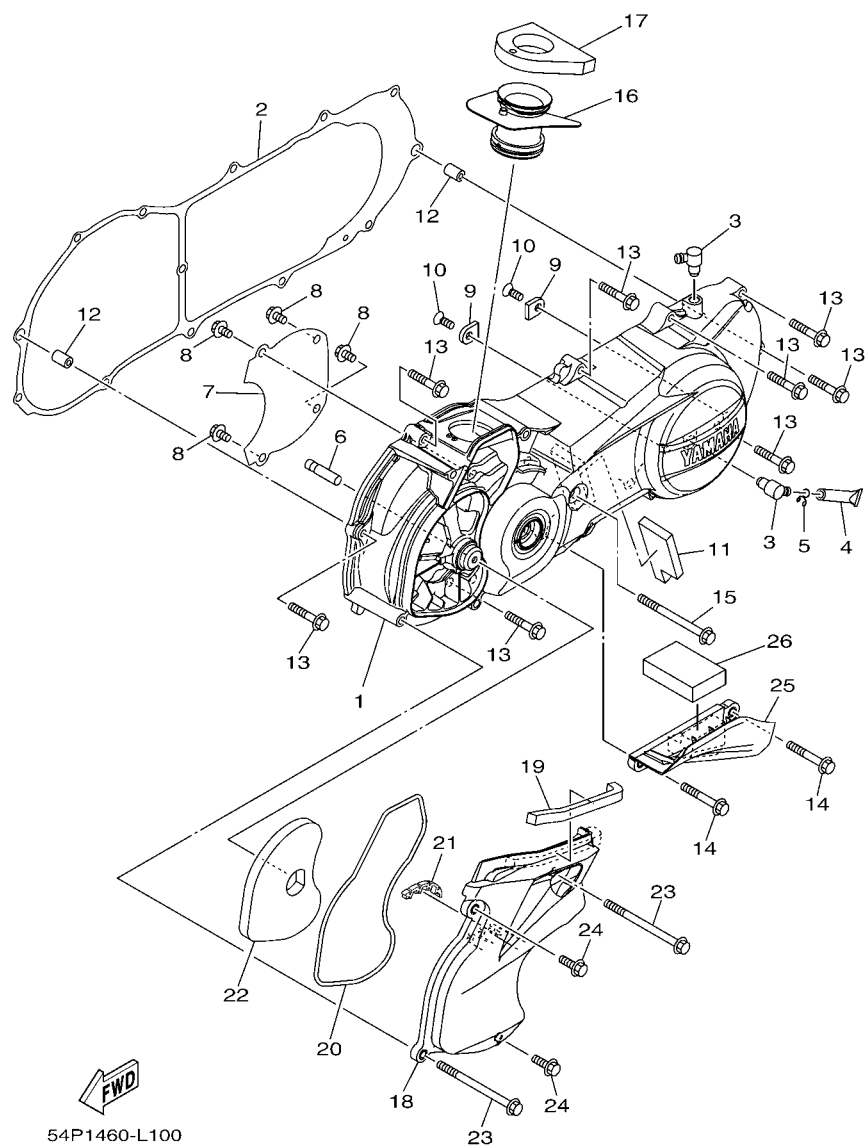


FIG. 10 CRANKCASE COVER 1

REF. NO.	PART NO.	DESCRIPTION	2BU1				REMARKS
1	54P-E5411-00	COVER, CRANKCASE 1	1				
2	54P-E5451-00	GASKET, CRANKCASE COVER 1	1				
3	54P-E5371-00	BREATHER	2				
4	4ST-E443E-00	PIPE, DRAIN	1				
5	90467-110A3	CLIP	1				
6	5LW-15659-01	SHAFT	1				
7	54P-E5191-00	PLATE	1				
8	95022-06010	BOLT, FLANGE	4				
9	54P-E5383-00	PLATE, BEARING COVER	2				
10	90151-06811	SCREW, COUNTERSUNK	2				
11	54P-E5316-00	DAMPER 1	1				
12	91810-14809	PIN, DOWEL	2				
13	95022-06035	BOLT, FLANGE	8				
14	95022-06045	BOLT, FLANGE	2				
15	95022-06080	BOLT, FLANGE	1				
16	54P-E5473-00	DUCT, AIR	1				
17	54P-E5408-00	ELEMENT 2	1				
18	54P-E5471-00	DUCT, AIR	1				
19	90520-10811	DAMPER, PLATE	1				
20	54P-E5472-00	SEAL, AIR DUCT	1				
21	54P-E5495-00	SEAL, PROTECTOR 1	1				
22	54P-E5407-00	ELEMENT 1	1				
23	95822-06090	BOLT, FLANGE	2				
24	95822-06020	BOLT, FLANGE	2				
25	54P-E5413-00	COVER	1				
26	90520-15806	DAMPER, PLATE	1				

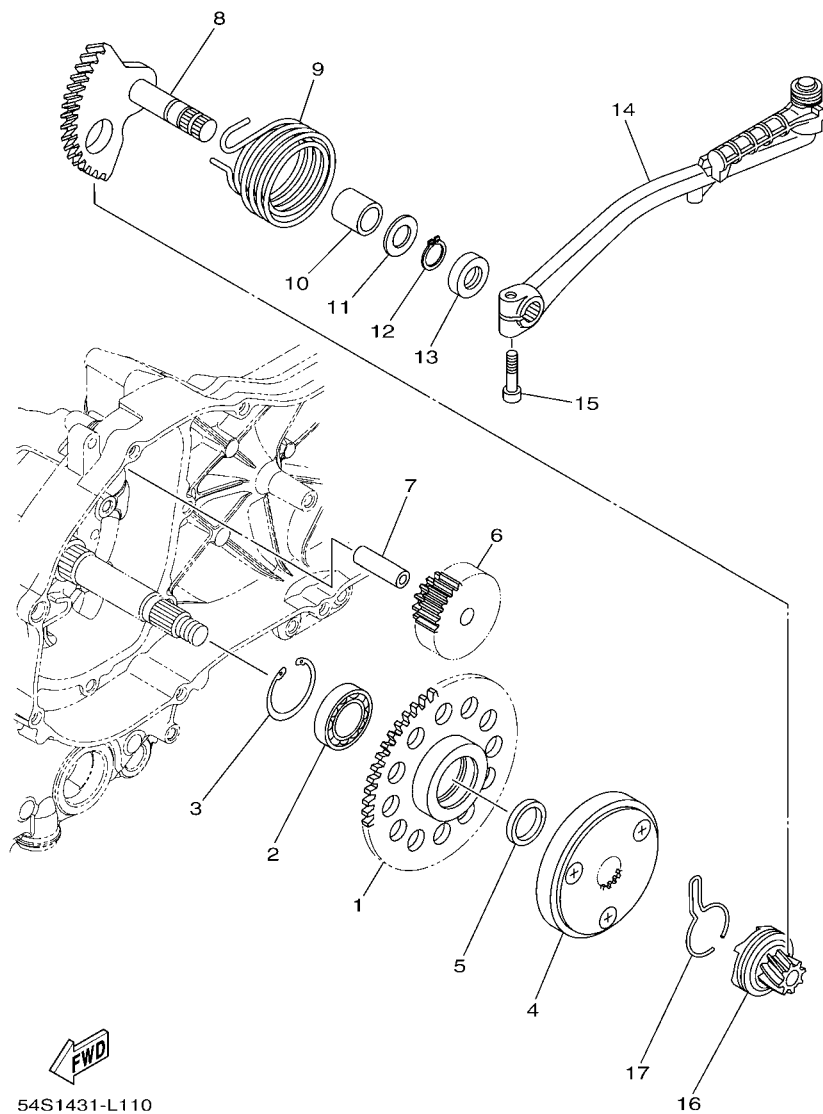


FIG. 11 STARTER

REF. NO.	PART NO.	DESCRIPTION	2BU1				REMARKS
1	54P-E5524-00	WHEEL, STARTER	1				
2	93306-804Y3	BEARING	1				UR
	93306-804Y6	BEARING	1				UR
	93306-804Y4	BEARING	1				UR
3	93450-32837	CIRCLIP	1				
4	18S-E5570-00	STARTER CLUTCH ASSY	1				
5	1GC-E5598-00	COLLAR	1				
6	54P-E5512-00	GEAR, IDLER 1	1				
7	44D-E5521-00	SHAFT 1	1				
8	5TL-E5601-10	KICK SHAFT ASSY	1				
9	90508-32768	SPRING, TORSION	1				
10	90380-15811	BUSH, SOLID	1				
11	90201-154E8	WASHER, PLATE (T=1.0)	1				
12	99009-15400	CIRCLIP	1				
13	93102-15801	OIL SEAL	1				
14	54P-E5620-00	KICK CRANK ASSY	1				
15	91312-06025	BOLT	1				
16	54P-E5630-00	KICK PINION ASSY	1				UR
	4VP-E5630-00	KICK PINION ASSY	1				UR
17	5MX-E5673-00	CLIP	1				

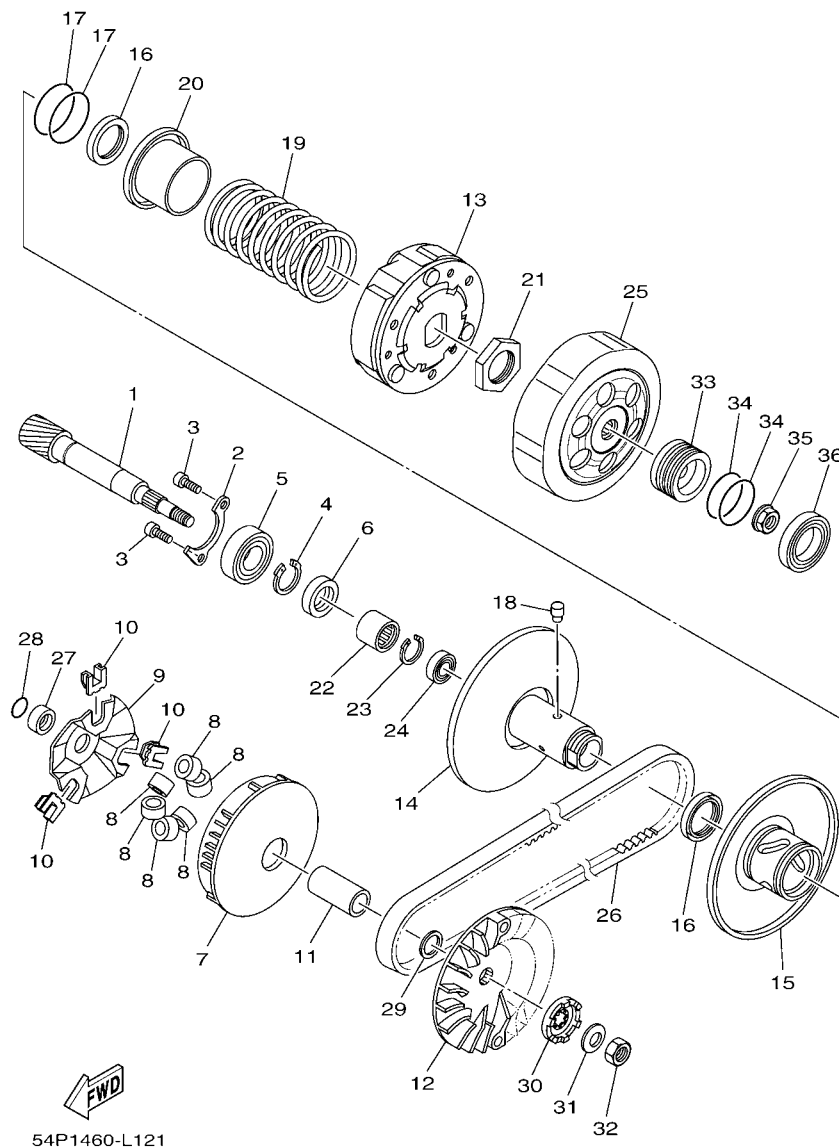


FIG. 12 CLUTCH

REF. NO.	PART NO.	DESCRIPTION	2BU1				REMARKS
1	54P-E6111-00	GEAR, PRIMARY DRIVE	1				
2	54P-E7471-00	PLATE, COVER	1				
3	91312-06010	BOLT	2				
4	99009-17400	CIRCLIP	1				
5	93306-253Y9	BEARING	1				
6	93102-17803	OIL SEAL	1				
7	54P-E7620-00	PRIMARY SLIDING SHEAVE COMP.	1				
8	54P-E7632-00	WEIGHT	6				
9	54P-E7623-00	CAM	1				
10	54P-E7653-00	SLIDER	3				
11	54P-E7674-00	COLLAR, GUIDE	1				
12	54P-E7611-00	SHEAVE, PRIMARY FIXED	1				
13	54P-E6620-00	CLUTCH CARRIER ASSY	1				
14	54P-E7660-00	SECONDARY FIXED SHEAVE COMP.	1				
15	54P-E7670-00	SECONDARY SLIDING SHEAVE	1				
16	54P-E7465-00	SEAL	2				
17	54P-E7465-10	SEAL	2				
18	5TL-E7664-00	PIN, GUIDE	3				
19	54P-E7683-00	SPRING, SECONDARY	1				
20	54P-E7684-00	SEAT, SECONDARY SPRING	1				
21	44D-E7668-00	NUT	1				
22	54P-E7678-00	BEARING	1				
23	44D-E5744-00	CIRCLIP	1				
24	54P-E7678-10	BEARING	1				
25	54P-E6611-00	CLUTCH HOUSING COMP.	1				
26	54P-E7641-00	V-BELT	1				
27	1GC-E7645-00	COLLAR	1				

[illegible]

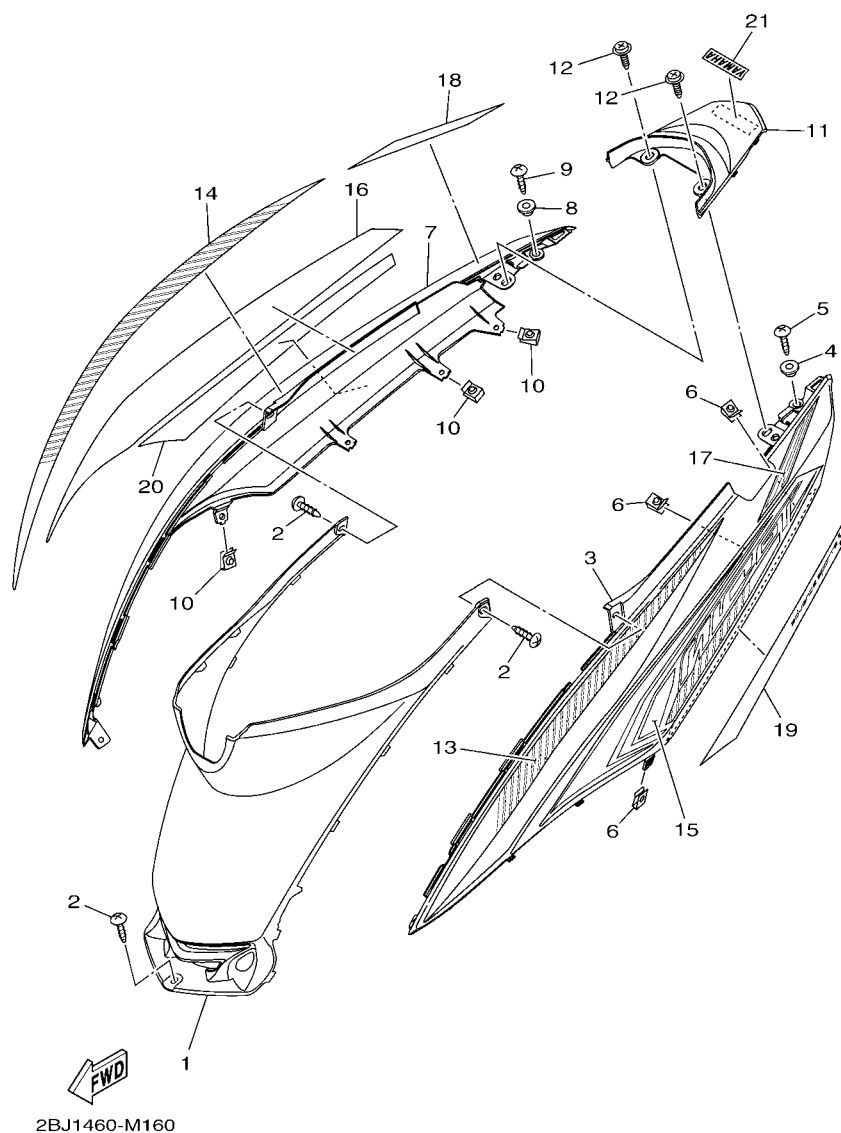


FIG. 16 SIDE COVER

REF. NO.	PART NO.	DESCRIPTION	2BJ1				REMARKS
1	54P-F172W-10	COVER	1				UR FOR WM6
	54P-F172W-00	COVER	1				UR FOR RM7,SMX
2	97707-50016	SCREW, TRUSS HEAD TAPPING	3				
3	54P-F1711-10-P3	COVER, SIDE 1	1				WM6 FOR WM6
	54P-F1711-10-P6	COVER, SIDE 1	1				SMX FOR RM7,SMX
4	90387-05820	COLLAR	1				
5	97707-50016	SCREW, TRUSS HEAD TAPPING	2				
6	90183-05807	NUT, SPRING	3				
7	54P-F1721-10-P3	COVER, SIDE 2	1				WM6 FOR WM6
	54P-F1721-10-P6	COVER, SIDE 2	1				SMX FOR RM7,SMX
8	90387-05820	COLLAR	1				
9	97707-50016	SCREW, TRUSS HEAD TAPPING	2				
10	90183-05807	NUT, SPRING	3				
11	54P-F1731-10-P3	COVER, SIDE 3	1				WM6 FOR WM6
	54P-F1731-10-P6	COVER, SIDE 3	1				SMX FOR RM7,SMX
12	90159-06810	SCREW, WITH WASHER	2				
13	2BJ-F173E-00	GRAPHIC 1	1				UR FOR WM6
	2BJ-F173E-10	GRAPHIC 1	1				UR FOR RM7
14	2BJ-F173F-00	GRAPHIC 2	1				UR FOR WM6
	2BJ-F173F-10	GRAPHIC 2	1				UR FOR RM7
15	2BJ-F174G-00	GRAPHIC 3	1				UR FOR WM6
	2BJ-F174G-10	GRAPHIC 3	1				UR FOR RM7
	2BJ-F174G-20	GRAPHIC 3	1				UR FOR SMX
16	2BJ-F174H-00	GRAPHIC 4	1				UR FOR WM6
	2BJ-F174H-10	GRAPHIC 4	1				UR FOR RM7
	2BJ-F174H-20	GRAPHIC 4	1				UR FOR SMX
17	2BJ-F174J-00	GRAPHIC 5	1				UR FOR WM6

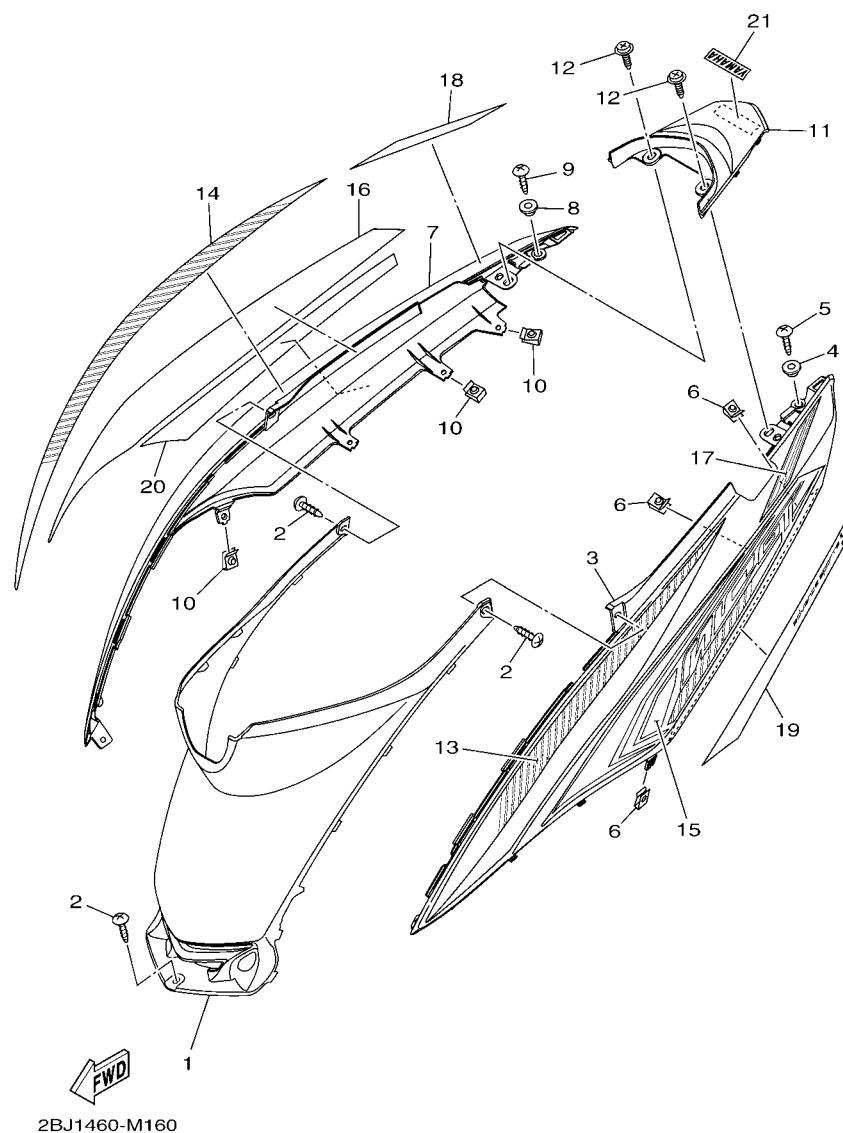


FIG. 16 SIDE COVER

REF. NO.	PART NO.	DESCRIPTION	2BJ1				REMARKS
17	2BJ-F174J-10	GRAPHIC 5	1				UR FOR RM7
	2BJ-F174J-20	GRAPHIC 5	1				UR FOR SMX
18	2BJ-F174K-00	GRAPHIC 6	1				UR FOR WM6
	2BJ-F174K-10	GRAPHIC 6	1				UR FOR RM7
	2BJ-F174K-20	GRAPHIC 6	1				UR FOR SMX
19	2BJ-F179J-00	GRAPHIC 7	1				UR FOR WM6
	2BJ-F179J-10	GRAPHIC 7	1				UR FOR RM7
	2BJ-F179J-20	GRAPHIC 7	1				UR FOR SMX
20	2BJ-F179K-00	GRAPHIC 8	1				UR FOR WM6
	2BJ-F179K-10	GRAPHIC 8	1				UR FOR RM7
	2BJ-F179K-20	GRAPHIC 8	1				UR FOR SMX
21	3S0-F153E-10	EMBLEM, YAMAHA	1				UR FOR WM6
	3S0-F153E-30	EMBLEM, YAMAHA	1				UR FOR RM7,SMX

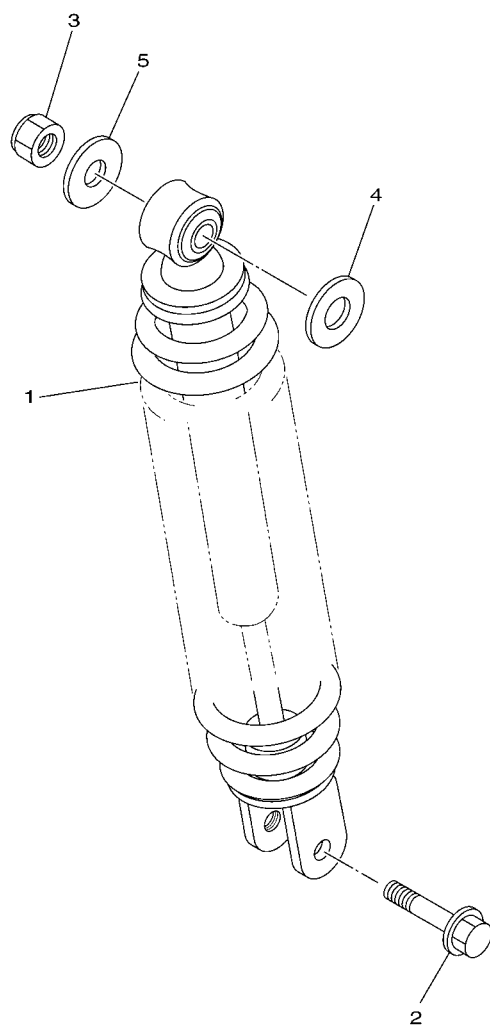


FIG. 17 REAR ARM & SUSPENSION

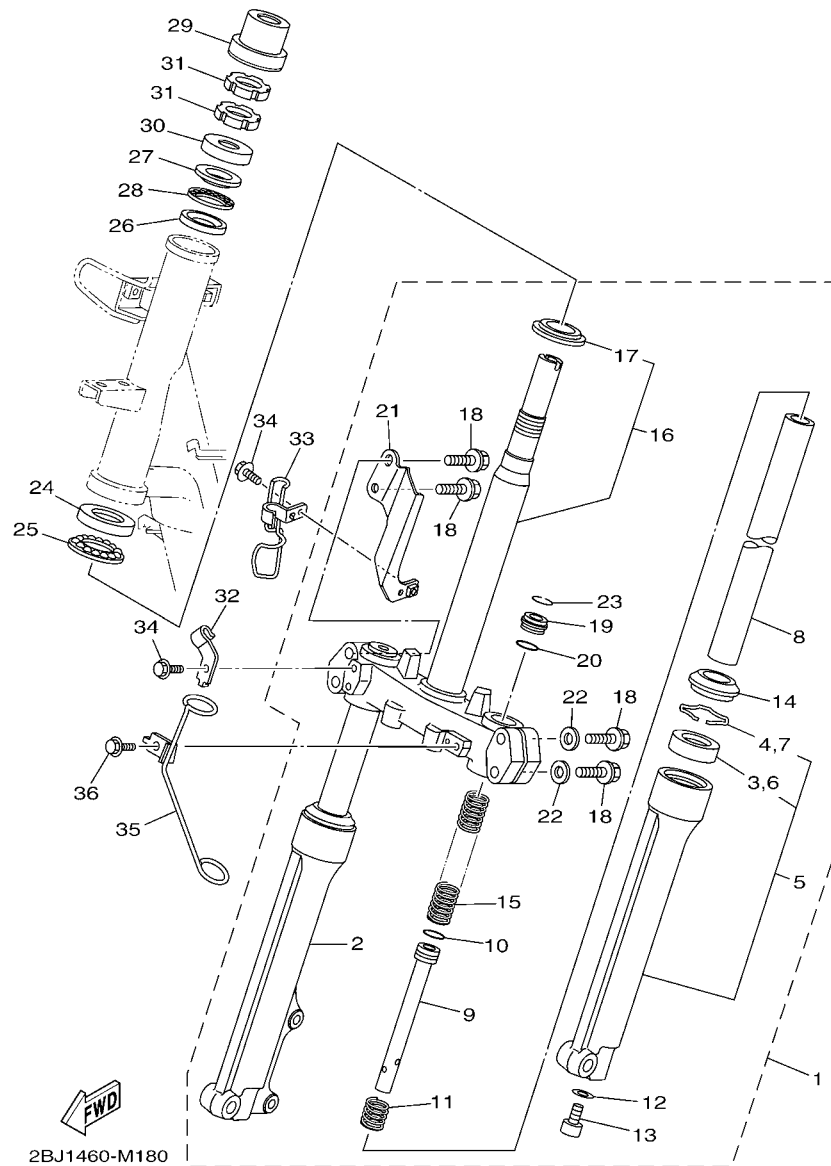


FIG. 18 STEERING

REF. NO.	PART NO.	DESCRIPTION	2BJ1				REMARKS
1	54P-F3100-10	FRONT FORK ASSY	1				
2	54P-F3136-10	.TUBE, OUTER (R.H)	1				
3	3AY-F3145-00	..OIL SEAL	1				
4	5P0-F3156-00	..RING, SNAP	1				
5	54P-F3126-10	.TUBE, OUTER (L.H)	1				
6	3AY-F3145-00	..OIL SEAL	1				
7	5P0-F3156-00	..RING, SNAP	1				
8	54P-F3110-10	.INNER TUBE COMP.1	2				
9	28D-F3170-00	.CYLINDER COMP., FRONT FORK	2				
10	2JG-F3157-00	.RING, PISTON	2				
11	5D9-F3152-00	.SPRING, SUB	2				
12	2BU-F3158-00	.GASKET	2				
13	278-F3181-50	.BOLT, HEXAGON SOCKET HEAD	2				
14	5LM-F3144-00	.SEAL, DUST	2				
15	54P-F3141-10	.SPRING, FRONT FORK	2				
16	54P-F3340-10	..UNDER BRACKET COMP.	1				
17	4FP-F3411-10	..RACE, BALL 1	1				
18	4D0-F3346-00	.BOLT 1	4				
19	1FC-F3111-10	.BOLT, CAP	2				
20	2JG-F3147-00	.O-RING	2				
21	54P-F334G-00	.BRACKET 1	1				
22	4D0-F3165-00	.WASHER, FELT	2				
23	5P0-F3153-00	.RING, SNAP	1				
24	1KL-F3412-10	RACE, BALL 2	1				
25	5VL-F341E-10	RETAINER, BALL BEARING	1				
26	4RT-F3412-10	RACE, BALL 2	1				
27	4RT-F3411-10	RACE, BALL 1	1				

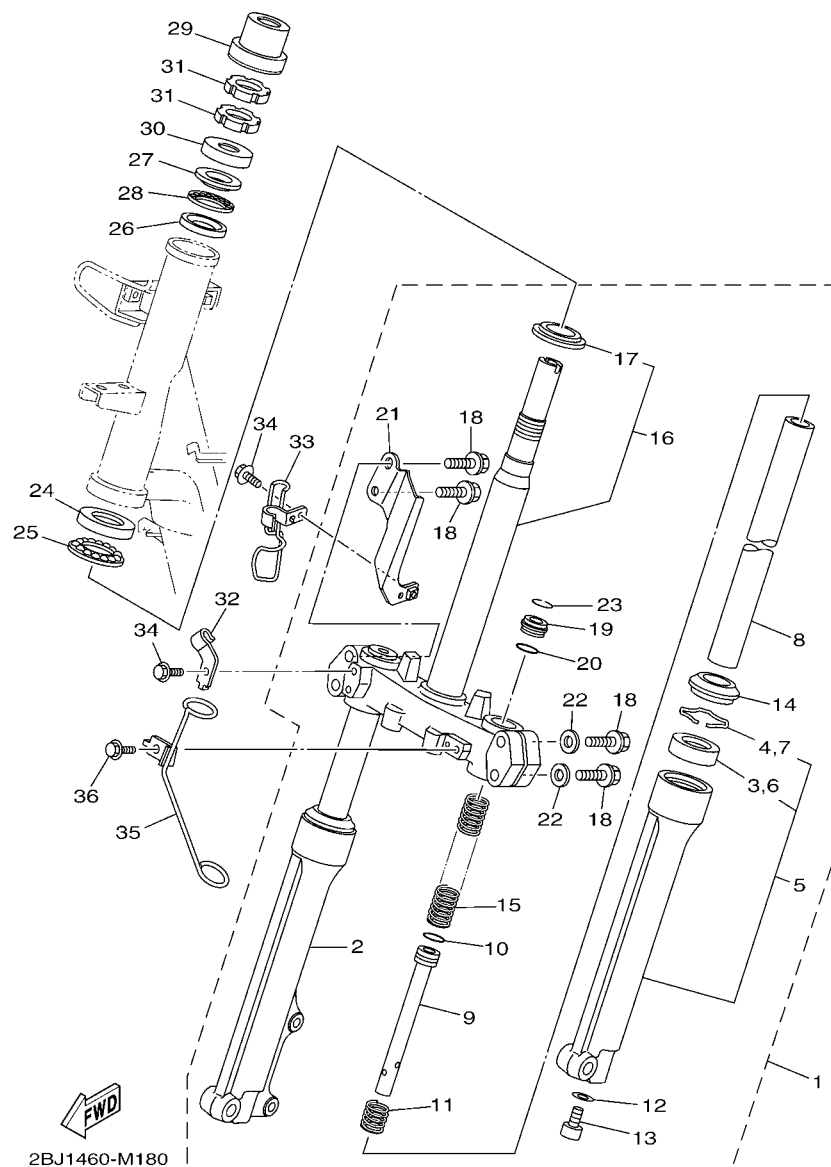


FIG. 18 STEERING

[illegible]

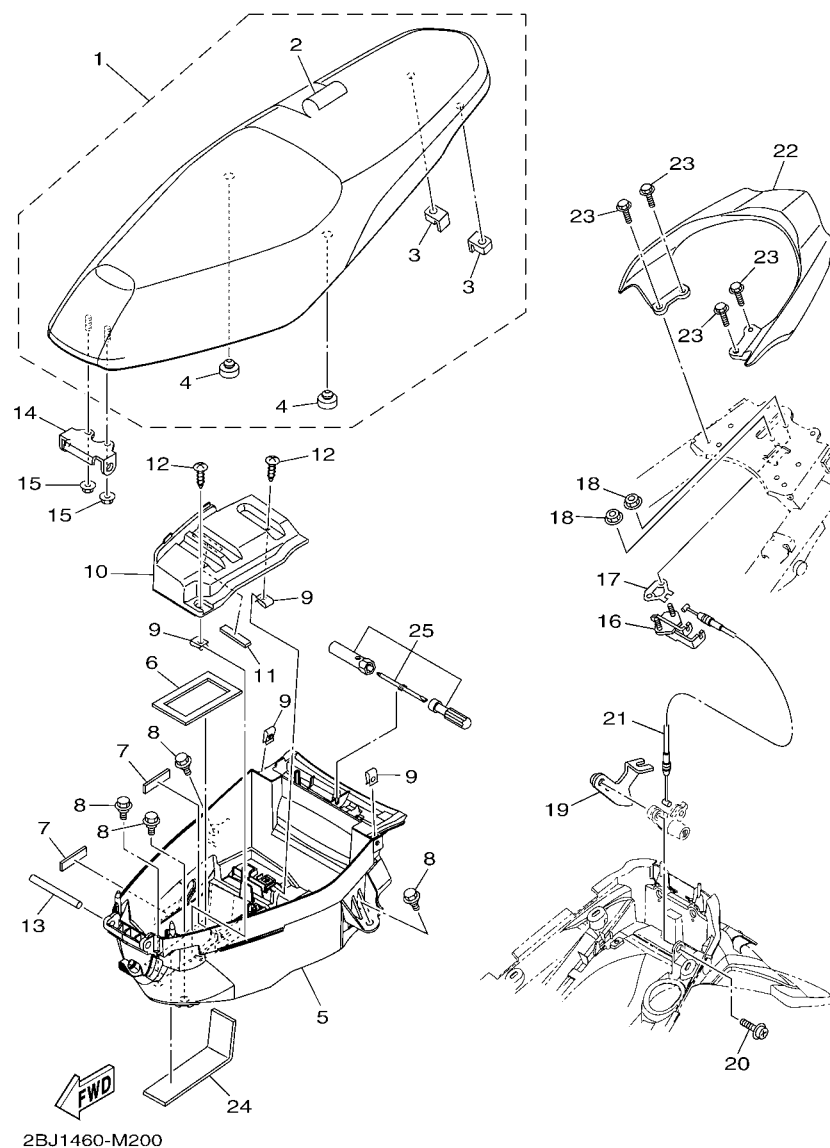


FIG. 20 SEAT

REF. NO.	PART NO.	DESCRIPTION	2BJ1					REMARKS
1	2BJ-F4730-00	DOUBLE SEAT ASSY	1					UR FOR WM6,RM7
	2BJ-F4730-10	DOUBLE SEAT ASSY	1					UR FOR SMX
2	2BJ-F470F-00	.SEAT COVER COMP.	1					UR FOR WM6,RM7
	2BJ-F470F-10	.SEAT COVER COMP.	1					UR FOR SMX
3	5TL-F4741-00	.PAD, SEAT	2					
4	3C1-F4741-00	.PAD, SEAT	2					
5	54P-F4704-00	BOX ASSY	1					
6	1KP-H2176-00	DAMPER	1					
7	90520-03806	DAMPER, PLATE	2					
8	90109-06202	BOLT	4					
9	90183-05807	NUT, SPRING	4					
10	54P-H2129-00	COVER, BATTERY	1					
11	90520-03806	DAMPER, PLATE	1					
12	97707-50012	SCREW, TRUSS HEAD TAPPING	2					
13	5TL-F4727-00	PIN, SEAT FITTING	1					
14	54P-F4726-00	HINGE, SEAT	1					
15	95702-06500	NUT, FLANGE	2					
16	5TL-F4780-00	SEAT LOCK ASSY	1					
17	5TL-F4792-00	PLATE	1					
18	95702-06500	NUT, FLANGE	2					
19	54P-F117K-00	STAY, LOCK	1					
20	90159-06054	SCREW, WITH WASHER	1					
21	54P-F478E-00	CABLE, SEAT LOCK	1					
22	54P-F4773-00-P7	HANDLE, SEAT	1					DRMK FOR WM6,RM7
	54P-F4773-00-35	HANDLE, SEAT	1					SL FOR SMX
23	95822-06016	BOLT, FLANGE	4					
24	90520-03810	DAMPER, PLATE	1					

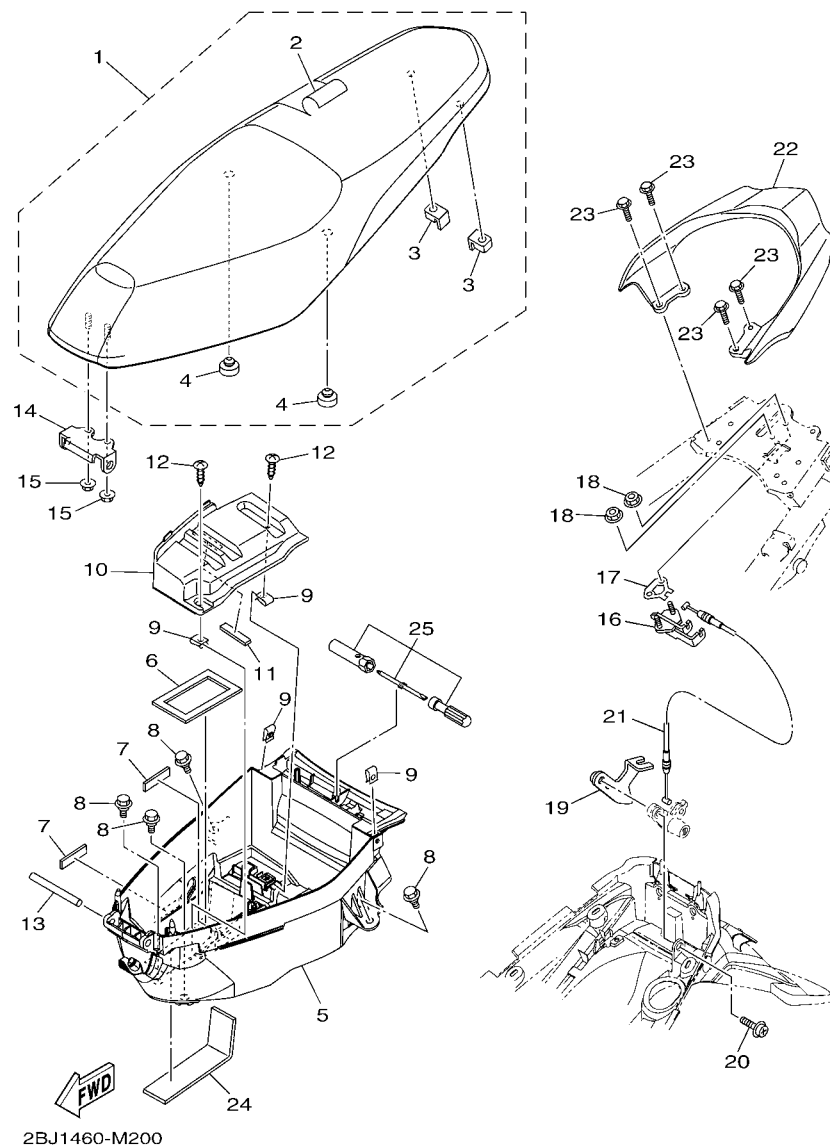


FIG. 20 SEAT

[illegible]

[illegible]

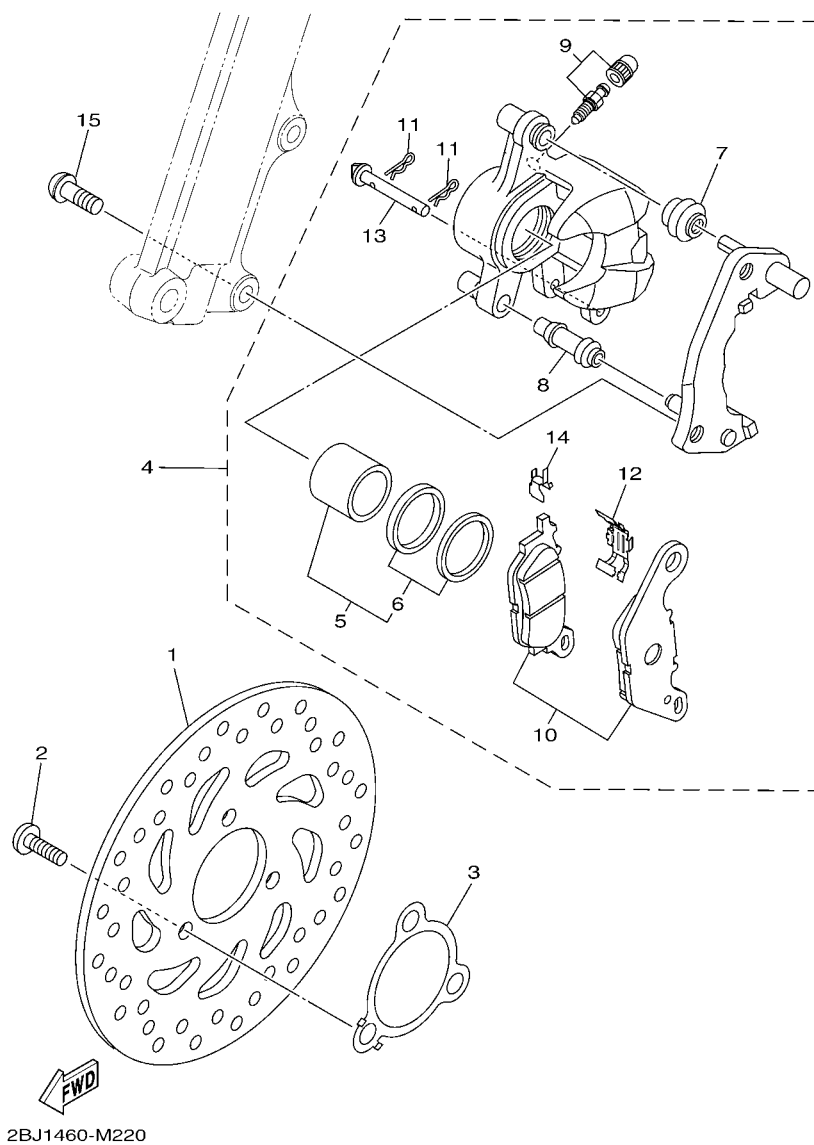


FIG. 22 FRONT BRAKE CALIPER

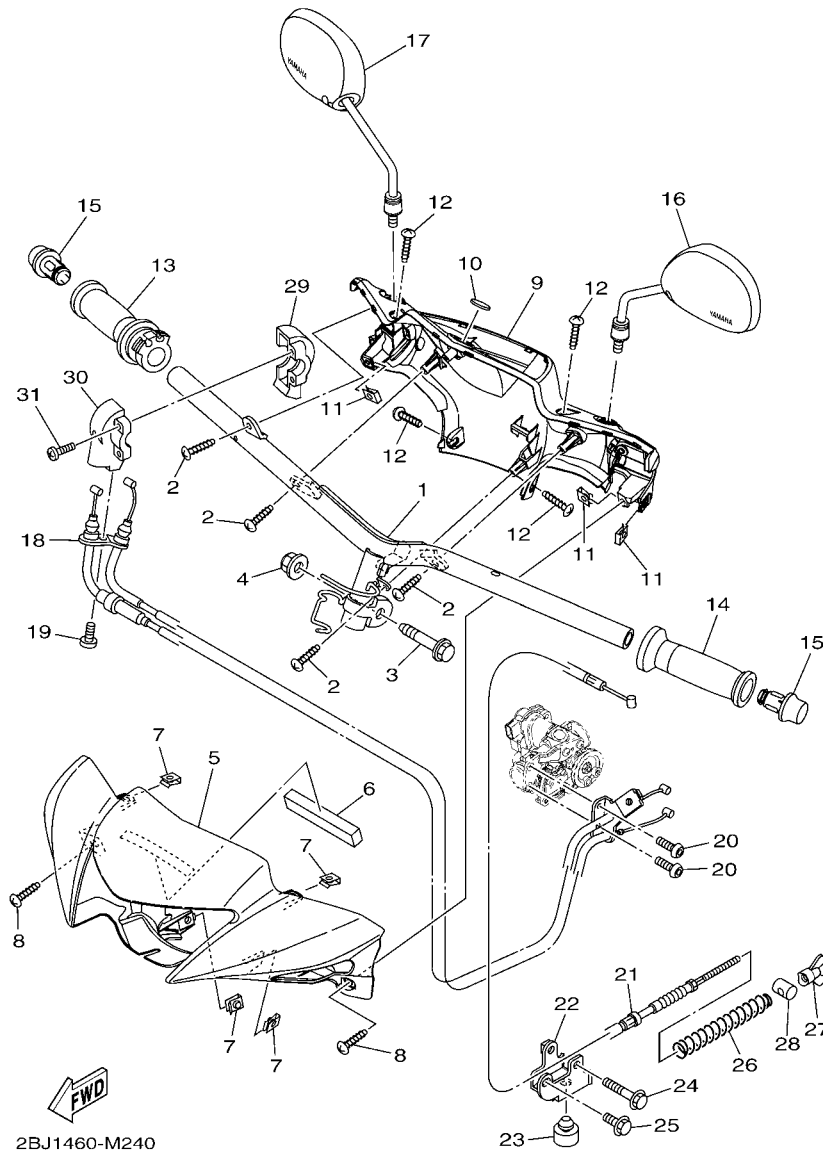


FIG. 24 STEERING HANDLE & CABLE

REF. NO.	PART NO.	DESCRIPTION	2BJ1				REMARKS
1	54P-F6110-00	HANDLE COMP.	1				
2	97707-50016	SCREW, TRUSS HEAD TAPPING	4				
3	90105-10896	BOLT, FLANGE	1				
4	90185-10011	NUT, SELF-LOCKING	1				
5	54P-F6143-10-P6	COVER, HANDLE UPPER 1	1				SMX
6	90520-20806	DAMPER, PLATE	1				
7	90183-05807	NUT, SPRING	4				
8	97707-50016	SCREW, TRUSS HEAD TAPPING	2				
9	54P-F6145-10	COVER, HAND UPPER 2	1				UR FOR WM6
	54P-F6145-00	COVER, HAND UPPER 2	1				UR FOR RM7,SMX
10	14D-F3108-00	EMBLEM	1				
11	90183-05807	NUT, SPRING	3				
12	97707-50016	SCREW, TRUSS HEAD TAPPING	4				
13	44D-F6240-00	GRIP ASSY	1				
14	44D-F6241-00	GRIP	1				
15	54P-F6246-00	END, GRIP	2				
16	54P-F6280-00	REAR VIEW MIRROR ASSY (LEFT)	1				
17	54P-F6290-00	REAR VIEW MIRROR ASSY (RIGHT)	1				
18	54P-F6301-20	THROTTLE CABLE ASSY	1				UR
	54P-F6301-30	THROTTLE CABLE ASSY	1				UR
19	92012-05016	BOLT, BUTTON HEAD	1				
20	92012-05010	BOLT, BUTTON HEAD	2				
21	54P-F6351-00	CABLE, BRAKE	1				UR
	54P-F6351-20	CABLE, BRAKE	1				UR
22	54P-F637G-00	HOLDER, WIRE	1				
23	54P-F7114-00	STOPPER, MAIN STAND	1				
24	95022-06040	BOLT, FLANGE	1				

[illegible]

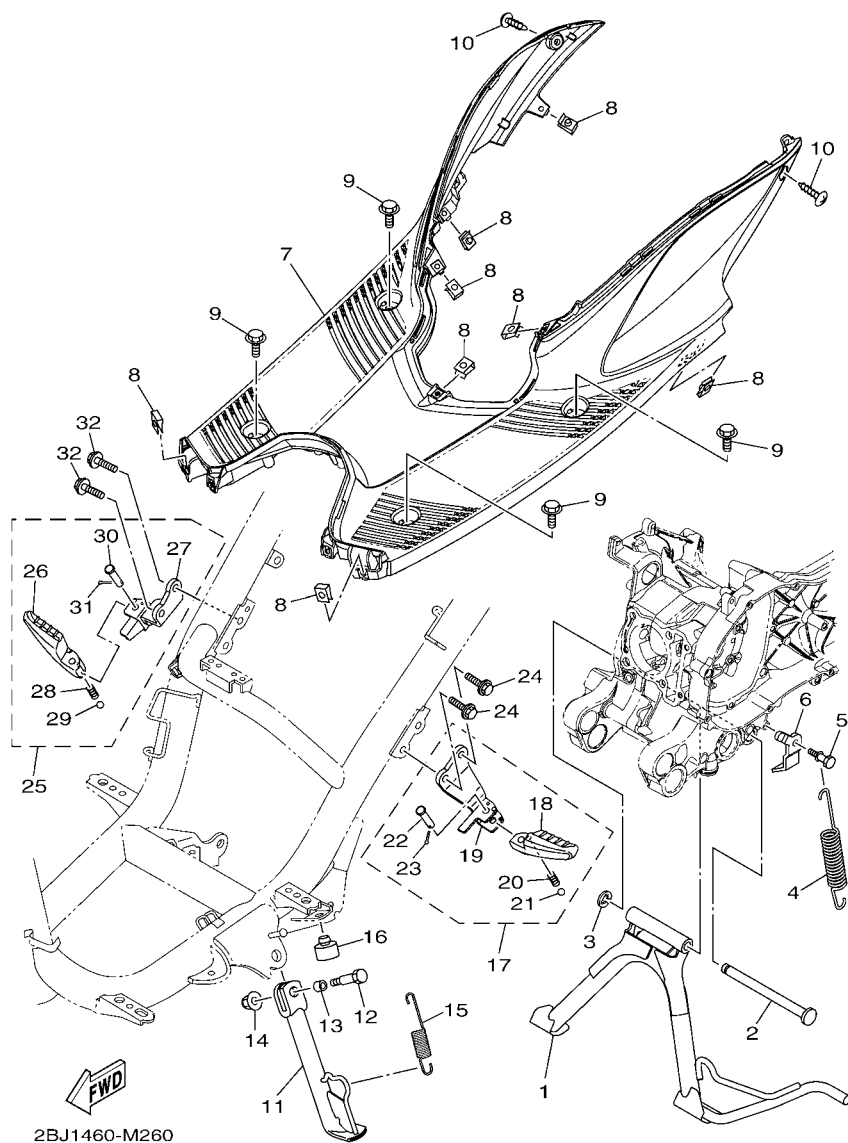


FIG. 26 STAND & FOOTREST

REF. NO.	PART NO.	DESCRIPTION	2BJ1				REMARKS
1	54P-F7111-10	STAND, MAIN	1				
2	54P-F7112-00	SHAFT, MAIN STAND	1				
3	99002-08600	CLIP	1				
4	90506-35821	SPRING, TENSION	1				
5	5LW-F7254-00	HOOK	1				
6	54P-F7267-00	GUIDE, WIRE	1				
7	54P-F7481-00	BOARD, FOOTREST	1				
8	90183-05807	NUT, SPRING	8				
9	90119-06044	BOLT, WITH WASHER	4				
10	97707-50016	SCREW, TRUSS HEAD TAPPING	2				
11	54P-F7311-00	STAND, SIDE	1				
12	90101-08847	BOLT	1				
13	90387-08820	COLLAR	1				
14	95602-08200	NUT, SELF-LOCKING	1				
15	90506-20514	SPRING, TENSION	1				
16	4YY-F7114-00	STOPPER, MAIN STAND	1				
17	54P-F7430-00	REAR FOOTREST ASSY 1	1				
18	54P-F7431-00	.FOOTREST, REAR 1	1				
19	54P-F7432-00	.BRACKET 1	1				
20	90501-12743	.SPRING, COMPRESSION	1				
21	93501-04843	.BALL	1				
22	91701-08035	.PIN	1				
23	91401-25015	.PIN, COTTER	1				
24	95802-08030	BOLT, FLANGE	2				
25	54P-F7440-00	REAR FOOTREST ASSY 2	1				
26	54P-F7441-00	.FOOTREST, REAR 2	1				
27	54P-F7442-00	.BRACKET 2	1				

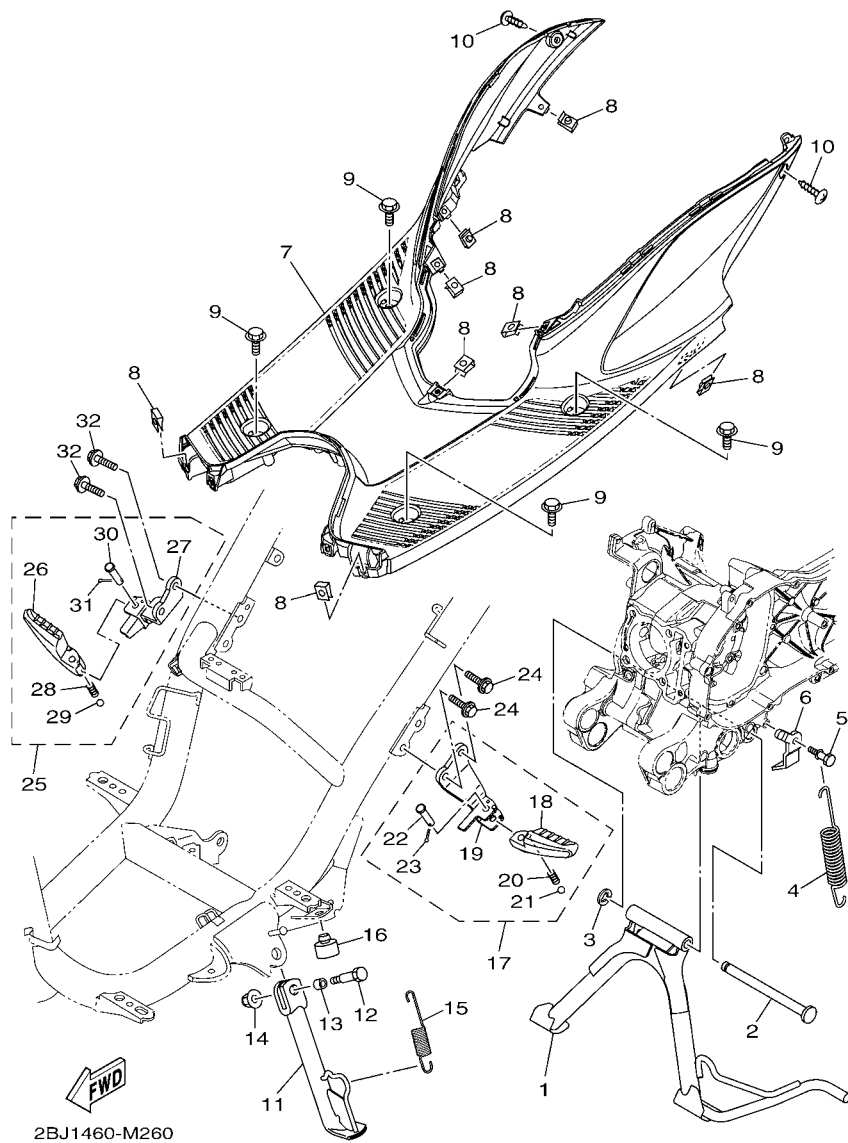


FIG. 26 STAND & FOOTREST

[illegible]

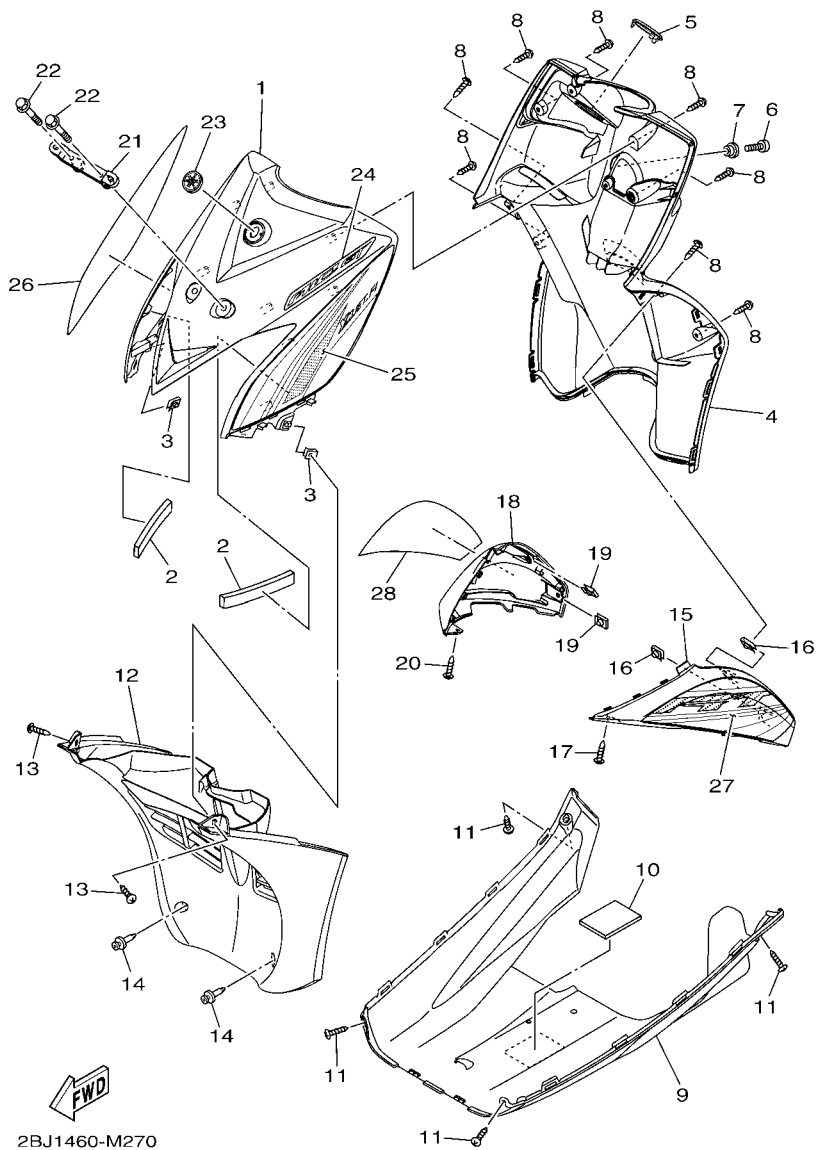
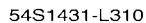


FIG. 27 LEG SHIELD

REF. NO.	PART NO.	DESCRIPTION	2BJ1				REMARKS
1	2BJ-F8311-00-P0	LEG SHIELD 1	1				SMX FOR WM6,SMX
	2BJ-F8311-00-P1	LEG SHIELD 1	1				RM7 FOR RM7
2	90183-05807	NUT, SPRING	2				
3	90520-08807	DAMPER, PLATE	2				
4	2BJ-F8300-10	LEG SHIELD ASSY	1				UR FOR WM6
	2BJ-F8300-00	LEG SHIELD ASSY	1				UR FOR RM7,SMX
5	54P-F8365-10	COVER	1				UR FOR WM6
	54P-F8365-00	COVER	1				UR FOR RM7,SMX
6	98907-06012	SCREW, BIND	1				
7	90387-07828	COLLAR	1				
8	97707-50016	SCREW, TRUSS HEAD TAPPING	8				
9	54P-F8385-00	COVER, UNDER	1				
10	4ST-F1638-00	DAMPER 1	1				
11	97707-50016	SCREW, TRUSS HEAD TAPPING	4				
12	2BJ-F1552-00	FENDER, INNER	1				
13	97707-50016	SCREW, TRUSS HEAD TAPPING	2				
14	90269-06812	RIVET	2				
15	2BJ-F835U-00-P0	PANEL 1	1				WM6 FOR WM6
	2BJ-F835U-00-P1	PANEL 1	1				SMX FOR RM7,SMX
16	90183-05807	NUT, SPRING	2				
17	97707-50016	SCREW, TRUSS HEAD TAPPING	1				
18	2BJ-F835V-00-P0	PANEL 2	1				WM6 FOR WM6
	2BJ-F835V-00-P1	PANEL 2	1				SMX FOR RM7,SMX
19	90183-05807	NUT, SPRING	2				
20	97707-50016	SCREW, TRUSS HEAD TAPPING	1				
21	2BJ-H454E-00	BRACKET, NUMBER PLATE	1				
22	95802-06030	BOLT, FLANGE	2				

[illegible]

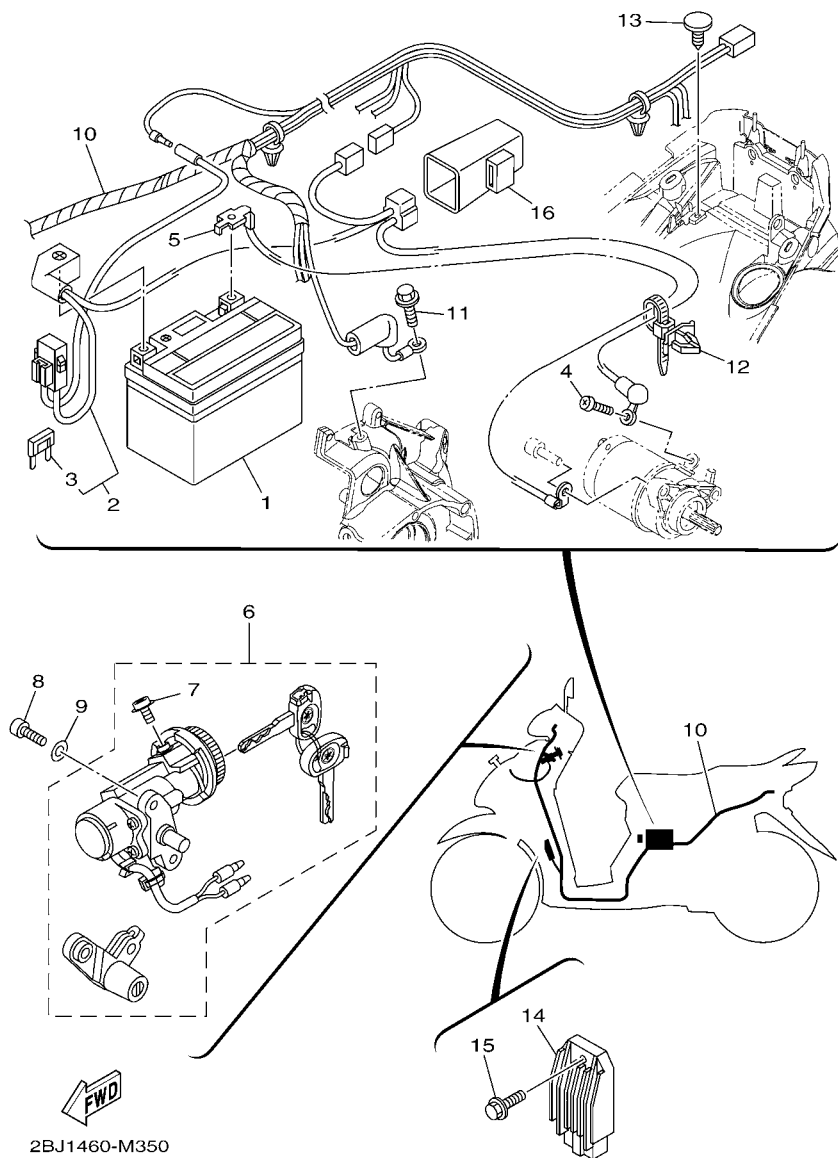


FIG. 35 ELECTRICAL 1

REF. NO.	PART NO.	DESCRIPTION	2BJ1				REMARKS
1	14D-H2100-00	BATTERY ASSY (YUASA YTZ4V)	1				UR
	14D-H2100-10	BATTERY ASSY (GS GZ4V)	1				UR
2	54P-H2115-00	WIRE, PLUS LEAD	1				
3	54P-H2151-00	.FUSE (15A)	1				
4	98902-05008	SCREW, BIND	1				
5	54P-H2116-00	WIRE, MINUS LEAD	1				
6	54P-XH252-00	MAIN SWITCH SUB ASSY.	1				
7	97602-05208	.SCREW, PAN HEAD WITH WASHER	1				
8	91312-06014	BOLT	2				
9	92902-06600	WASHER, PLATE	2				
10	2BJ-H2590-00	WIRE HARNESS ASSY	1				UR
	2BJ-H2590-10	WIRE HARNESS ASSY	1				UR
11	95022-06012	BOLT, FLANGE	1				
12	90464-12810	CLAMP	1				
13	90269-06811	RIVET	1				
14	54P-H1960-00	RECTIFIER & REGULATOR ASSY	1				
15	90105-068A0	BOLT, FLANGE	1				
16	5TP-H1940-00	STARTER RELAY ASSY	1				

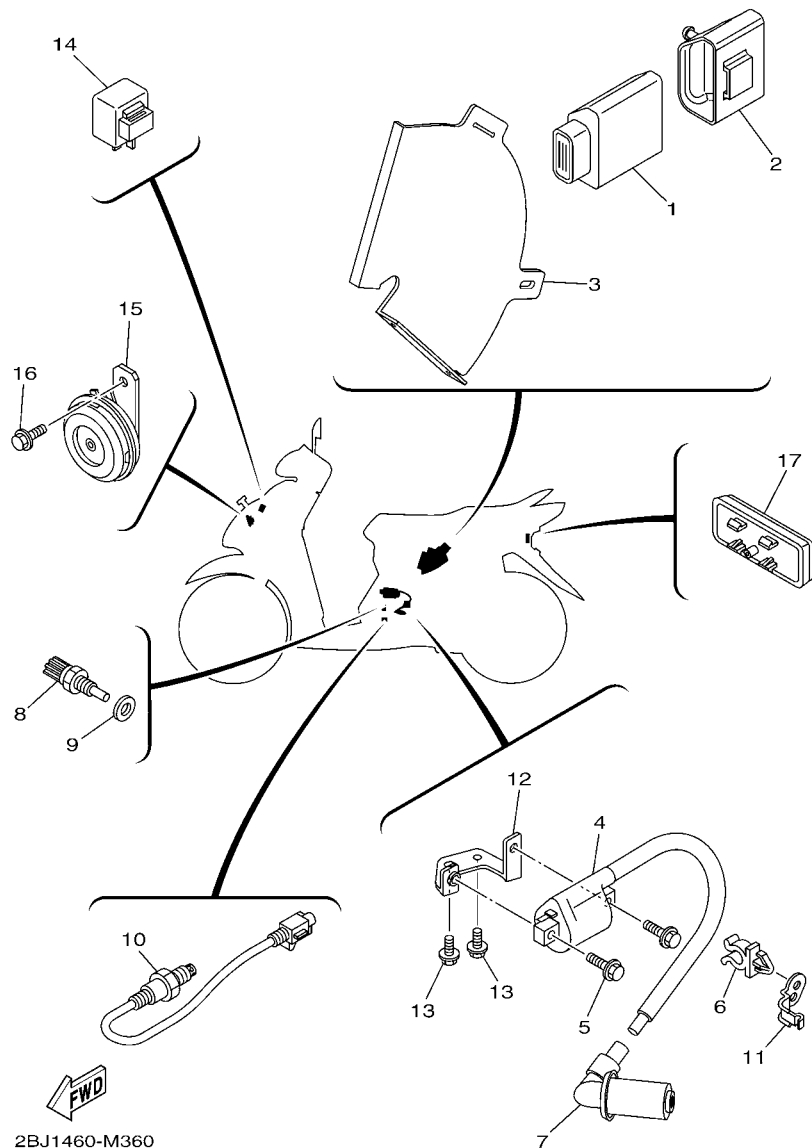
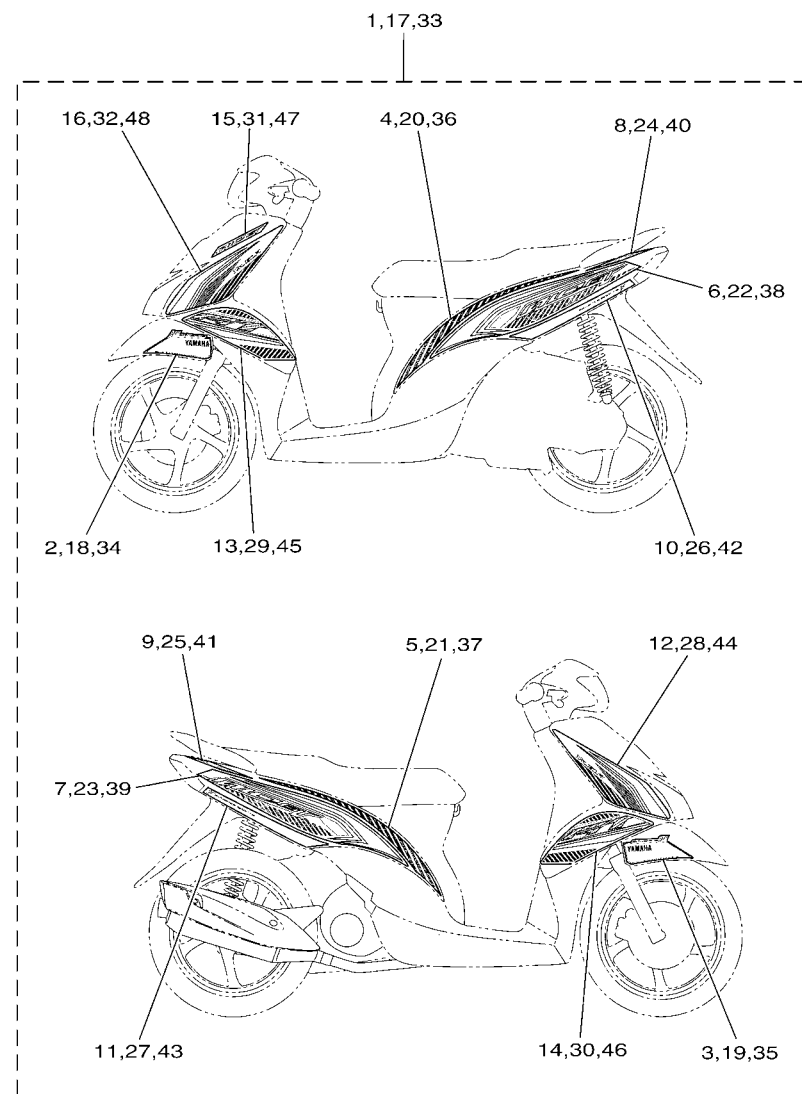


FIG. 36 ELECTRICAL 2

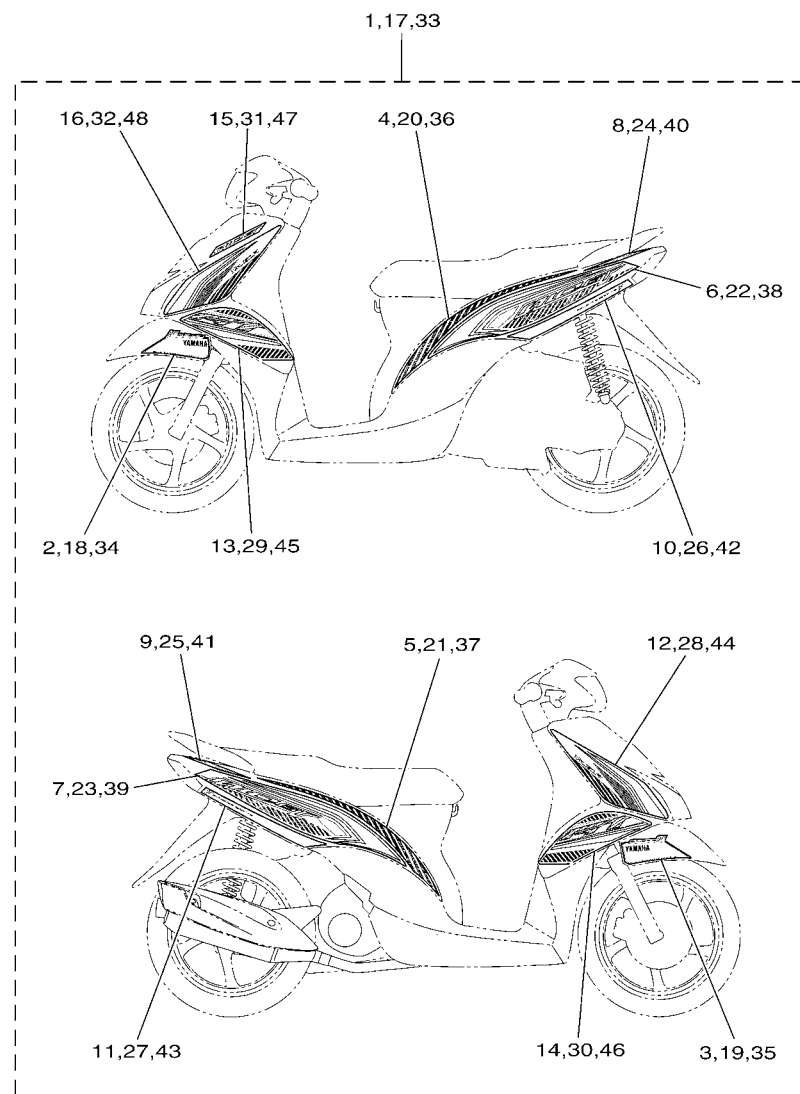
REF. NO.	PART NO.	DESCRIPTION	2BU1				REMARKS
1	54P-H591A-10	ENGINE CONTROL UNIT ASSY	1				
2	54P-H5546-00	BAND	1				
3	54P-H2599-00	COVER, CONNECTER	1				
4	54P-H2310-10	IGNITION COIL ASSY	1				
5	95022-06020	BOLT, FLANGE	2				
6	90464-14808	CLAMP	1				
7	54P-H2370-00	PLUG CAP ASSY	1				
8	54P-H3591-00	THERMO UNIT	1				
9	90430-10804	GASKET	1				
10	54P-H592A-00	SENSOR, OXYGEN	1				
11	54P-H1328-00	CLAMP	1				
12	1KP-H2316-00	BRACKET, IGNITION COIL	1				
13	95022-06010	BOLT, FLANGE	2				
14	5D9-H3350-00	FLASHER RELAY ASSY	1				
15	54P-H3371-00	HORN	1				
16	95802-06010	BOLT, FLANGE	1				
17	54P-H5130-00	REAR REFLECTOR ASSY	1				



2BJ1460-M370

FIG. 37 OPTIONAL PARTS 1

REF. NO.	PART NO.	DESCRIPTION	2BJ1				REMARKS
1	2BJ-WF070-00	(KIT) GRAPHIC SET	1				FOR WM6
2	2BJ-F1569-00	.GRAPHIC 1	1				
3	2BJ-F1579-00	.GRAPHIC 2	1				
4	2BJ-F173E-00	.GRAPHIC 1	1				
5	2BJ-F173F-00	.GRAPHIC 2	1				
6	2BJ-F174G-00	.GRAPHIC 3	1				
7	2BJ-F174H-00	.GRAPHIC 4	1				
8	2BJ-F174J-00	.GRAPHIC 5	1				
9	2BJ-F174K-00	.GRAPHIC 6	1				
10	2BJ-F179J-00	.GRAPHIC 7	1				
11	2BJ-F179K-00	.GRAPHIC 8	1				
12	2BJ-F831Y-00	.GRAPHIC, 14	1				
13	2BJ-F832B-00	.GRAPHIC, 15	1				
14	2BJ-F832C-00	.GRAPHIC, 16	1				
15	2BJ-F832K-00	.GRAPHIC, 12	1				
16	2BJ-F832L-00	.GRAPHIC, 13	1				
17	2BJ-WF070-10	(KIT) GRAPHIC SET	1				FOR RM7
18	2BJ-F1569-10	.GRAPHIC 1	1				
19	2BJ-F1579-10	.GRAPHIC 2	1				
20	2BJ-F173E-10	.GRAPHIC 1	1				
21	2BJ-F173F-10	.GRAPHIC 2	1				
22	2BJ-F174G-10	.GRAPHIC 3	1				
23	2BJ-F174H-10	.GRAPHIC 4	1				
24	2BJ-F174J-10	.GRAPHIC 5	1				
25	2BJ-F174K-10	.GRAPHIC 6	1				
26	2BJ-F179J-10	.GRAPHIC 7	1				
27	2BJ-F179K-10	.GRAPHIC 8	1				



2BJ1460-M370

FIG. 37 OPTIONAL PARTS 1

REF. NO.	PART NO.	DESCRIPTION	2BJ1				REMARKS
28	2BJ-F831Y-10	.GRAPHIC, 14	1				
29	2BJ-F832B-10	.GRAPHIC, 15	1				
30	2BJ-F832C-10	.GRAPHIC, 16	1				
31	2BJ-F832K-10	.GRAPHIC, 12	1				
32	2BJ-F832L-10	.GRAPHIC, 13	1				
33	2BJ-WF070-20	(KIT) GRAPHIC SET	1				FOR SMX
34	2BJ-F1569-20	.GRAPHIC 1	1				
35	2BJ-F1579-20	.GRAPHIC 2	1				
36	2BJ-F173E-20	.GRAPHIC 1	1				
37	2BJ-F173F-20	.GRAPHIC 2	1				
38	2BJ-F174G-20	.GRAPHIC 3	1				
39	2BJ-F174H-20	.GRAPHIC 4	1				
40	2BJ-F174J-20	.GRAPHIC 5	1				
41	2BJ-F174K-20	.GRAPHIC 6	1				
42	2BJ-F179J-20	.GRAPHIC 7	1				
43	2BJ-F179K-20	.GRAPHIC 8	1				
44	2BJ-F831Y-20	.GRAPHIC, 14	1				
45	2BJ-F832B-20	.GRAPHIC, 15	1				
46	2BJ-F832C-20	.GRAPHIC, 16	1				
47	2BJ-F832K-20	.GRAPHIC, 12	1				
48	2BJ-F832L-20	.GRAPHIC, 13	1				

NUMERICAL INDEX

PART NO.	REF. NO.	PART NO.	REF. NO.	PART NO.	REF. NO.	PART NO.	REF. NO.	PART NO.	REF. NO.	PART NO.	REF. NO.
5LW-15659-01	10 - 6	54P-E2658-00	6 - 2	54P-E5316-00	10 - 11	54P-E7632-00	12 - 8	2BJ-F173E-10	16 - 13	54P-F3100-10	18 - 1
36Y-2589H-00	25 - 8	54P-E2659-00	6 - 9	54P-E5351-00	5 - 4	54P-E7641-00	12 - 26		37 - 20	14D-F3108-00	24 - 10
54P-E1102-00	1 - 1	44D-E2662-00	3 - 11	54P-E5362-00	9 - 21	1GC-E7645-00	12 - 27	2BJ-F173E-20	37 - 36	54P-F3110-10	18 - 8
54P-E111F-00	4 - 3	54P-E2668-00	6 - 10	5LW-E5363-00	9 - 18	54P-E7649-00	12 - 33	2BJ-F173F-00	16 - 14	1FC-F3111-10	18 - 19
54P-E111J-00	1 - 7	54P-E2684-00	6 - 5	54P-E5371-00	9 - 7	54P-E7653-00	12 - 10		37 - 5	54P-F3126-10	18 - 5
54P-E1133-10	1 - 2	1GC-E3300-00	5 - 1		10 - 3	54P-E7660-00	12 - 14	2BJ-F173F-10	16 - 14	54P-F3136-10	18 - 2
54P-E1165-00	1 - 9	5TL-E3324-00	2 - 8	54P-E5373-00	9 - 8	5TL-E7664-00	12 - 18		37 - 21	31B-F313B-00	27 - 23
54P-E1166-00	7 - 39	54P-E3411-00	5 - 5	54P-E5383-00	10 - 9	44D-E7668-00	12 - 21	2BJ-F173F-20	37 - 37	54P-F3141-10	18 - 15
54P-E1169-00	1 - 10	5LW-E3452-00	2 - 6	54P-E5407-00	10 - 22	54P-E7670-00	12 - 15	2BJ-F174G-00	16 - 15	5LM-F3144-00	18 - 14
1LB-E1173-00	1 - 13	54P-E3474-00	7 - 16	14D-E5408-00	9 - 9	54P-E7674-00	12 - 11		37 - 6	3AY-F3145-00	18 - 3
54P-E1181-00	1 - 17	5LW-E3475-00	5 - 2	54P-E5408-00	10 - 17	54P-E7678-00	12 - 22	2BJ-F174G-10	16 - 15		18 - 6
54P-E1191-00	1 - 8	54P-E3556-10	7 - 3	54P-E5411-00	10 - 1	54P-E7678-10	12 - 24		37 - 22	2JG-F3147-00	18 - 20
54P-E1193-00	1 - 14	54P-E3557-00	7 - 14	54P-E5413-00	10 - 25	54P-E7683-00	12 - 19	2BJ-F174G-20	16 - 15	5D9-F3152-00	18 - 11
4YS-E1198-00	9 - 15	5LW-E3569-00	6 - 16	54P-E5417-00	9 - 23	54P-E7684-00	12 - 20		37 - 38	5P0-F3153-00	18 - 23
54P-E1311-10	1 - 21	54P-E3575-00	7 - 37	54P-E5421-00	9 - 36	54P-F1110-30	14 - 1	2BJ-F174H-00	16 - 16	5P0-F3156-00	18 - 4
54P-E1351-00	1 - 22	54P-E3585-00	7 - 1	54P-E5423-00	9 - 30	54P-F1161-00	18 - 35		37 - 7		18 - 7
54P-E1400-10	2 - 1	54P-E3593-00	7 - 5	54P-E5451-00	10 - 2	54P-F117K-00	20 - 19	2BJ-F174H-10	16 - 16	2JG-F3157-00	18 - 10
54P-E1422-00	2 - 5	54P-E3595-00	7 - 2	54P-E5453-00	9 - 26	54P-F1410-00	14 - 3		37 - 23	2BU-F3158-00	18 - 12
54P-E1445-00	2 - 14	54P-E3750-10	7 - 17	54P-E5461-00	9 - 37	54P-F1459-00	14 - 10	2BJ-F174H-20	16 - 16	4D0-F3165-00	18 - 22
54P-E1445-10	2 - 14	54P-E3761-10	7 - 9	54P-E5471-00	10 - 18	54P-F1511-10-P6	15 - 1		37 - 39	28D-F3170-00	18 - 9
54P-E1603-00	2 - 13	5LW-E3769-00	9 - 22	54P-E5472-00	10 - 20	3S0-F153E-10	16 - 21	2BJ-F174J-00	16 - 17	278-F3181-50	18 - 13
54P-E1631-00	2 - 10	54P-E3770-10	7 - 8	54P-E5473-00	10 - 16	3S0-F153E-30	16 - 21		37 - 8	54P-F3340-10	18 - 16
54P-E1633-00	2 - 11	54P-E3815-00	7 - 20	54P-E5495-00	10 - 21	2BJ-F1552-00	27 - 12	2BJ-F174J-10	16 - 17	4D0-F3346-00	18 - 18
5D9-E1651-00	2 - 4	54P-E3892-00	7 - 18	54P-E5512-00	11 - 6	2BJ-F1569-00	15 - 3		37 - 24	54P-F334G-00	18 - 21
5MX-E1681-10	2 - 2	54P-E3895-00	7 - 19	44D-E5521-00	11 - 7		37 - 2	2BJ-F174J-20	16 - 17	4FP-F3411-10	18 - 17
54P-E2111-00	3 - 1	54P-E3907-10	19 - 6	54P-E5524-00	11 - 1	2BJ-F1569-10	15 - 3		37 - 40	4RT-F3411-10	18 - 27
54P-E2113-00	3 - 4	54P-E3915-00	19 - 7	18S-E5570-00	11 - 4		37 - 18	2BJ-F174K-00	16 - 18	1KL-F3412-10	18 - 24
1KP-E2117-00	3 - 6	54P-E3938-00	7 - 12	1GC-E5598-00	11 - 5	2BJ-F1569-20	15 - 3		37 - 9	4RT-F3412-10	18 - 26
5TL-E2118-00	3 - 5	54P-E3971-00	19 - 3	5TL-E5601-10	11 - 8		37 - 34	2BJ-F174K-10	16 - 18	54P-F3415-00	18 - 30
54P-E2119-00	3 - 3	54P-E4137-00	7 - 13	54P-E5620-00	11 - 14	2BJ-F1579-00	15 - 4		37 - 25	3AY-F3416-00	18 - 29
54P-E2121-00	3 - 2	54P-E4146-00	7 - 23	4VP-E5630-00	11 - 16		37 - 3	2BJ-F174K-20	16 - 18	1P6-F341E-10	18 - 28
1DY-E2126-00	3 - 7	54P-E4147-00	7 - 10	54P-E5630-00	11 - 16	2BJ-F1579-10	15 - 4		37 - 41	5VL-F341E-10	18 - 25
54P-E2146-00	3 - 12	5CA-E4147-00	7 - 11	5MX-E5657-00	12 - 30		37 - 19	2BJ-F179J-00	16 - 19	54P-F4110-10	19 - 1
54P-E2151-00	3 - 8	54P-E4411-10	7 - 24	5MX-E5673-00	11 - 17	2BJ-F1579-20	15 - 4		37 - 10	54P-F414A-00	19 - 11
54P-E2151-10	3 - 8	54P-E4412-10	7 - 25	44D-E5744-00	12 - 23		37 - 35	2BJ-F179J-10	16 - 19	54P-F414G-00	19 - 8
33S-E2159-00	3 - 10	54P-E442F-10	7 - 42	54P-E6111-00	12 - 1	54P-F1611-00	15 - 5		37 - 26	5D9-F414G-00	14 - 2
54P-E2170-00	4 - 1	54P-E4437-10	7 - 28	54P-E6611-00	12 - 25	54P-F1621-00	15 - 10	2BJ-F179J-20	16 - 19	54P-F419F-00	19 - 4
44D-E2176-00	4 - 5	4ST-E443E-00	10 - 4	54P-E6620-00	12 - 13	4ST-F1638-00	27 - 10		37 - 42	54P-F4491-00	19 - 9
5MX-E2210-10	4 - 11	5TL-E443E-00	7 - 31	54P-E7155-00	13 - 8	54P-F1711-10-P3	16 - 3	2BJ-F179K-00	16 - 20	4YY-F4610-10	19 - 12
54P-E2213-00	4 - 12	5TN-E443G-00	7 - 30	54P-E7211-00	13 - 5	54P-F1711-10-P6	16 - 3		37 - 11	4YY-F4612-10	19 - 13
54P-E2228-00	4 - 14	54P-E4452-10	7 - 27	54P-E7410-00	13 - 1	54P-F1721-10-P3	16 - 7	2BJ-F179K-10	16 - 20	54P-F4704-00	20 - 5
54P-E2231-00	4 - 7	54P-E4453-10	7 - 29	54P-E7421-00	13 - 4	54P-F1721-10-P6	16 - 7		37 - 27	2BJ-F470F-00	20 - 2
44D-E2233-00	4 - 8	54P-E4610-00	8 - 1	54P-E7465-00	12 - 16	54P-F172W-00	16 - 1	2BJ-F179K-20	16 - 20	2BJ-F470F-10	20 - 2
54P-E2241-00	4 - 10	14D-E4613-00	8 - 5	54P-E7465-10	12 - 17	54P-F172W-10	16 - 1		37 - 43	54P-F4726-00	20 - 14
54P-E2611-00	6 - 13	54P-E4718-00	8 - 2	54P-E7471-00	12 - 2	54P-F1731-10-P3	16 - 11	54P-F2141-00	14 - 12	5TL-F4727-00	20 - 13
54P-E262H-00	6 - 4	54P-E5113-00	9 - 20	54P-E7611-00	12 - 12	54P-F1731-10-P6	16 - 11	54P-F2210-30	17 - 1	2BJ-F4730-00	20 - 1
54P-E2651-00	6 - 1	54P-E5150-10	9 - 1	54P-E7620-00	12 - 7	2BJ-F173E-00	16 - 13	54P-F2210-40	17 - 1	2BJ-F4730-10	20 - 1
54P-E2652-00	6 - 3	54P-E5191-00	10 - 7	54P-E7623-00	12 - 9		37 - 4	5MX-F2216-00	9 - 5	3C1-F4741-00	20 - 4

NUMERICAL INDEX

PART NO.	REF. NO.	PART NO.	REF. NO.	PART NO.	REF. NO.	PART NO.	REF. NO.	PART NO.	REF. NO.	PART NO.	REF. NO.
5TL-F4741-00	20 - 3	54P-F6301-20	24 - 18	2BJ-F832K-20	27 - 24	28D-H3358-00	30 - 5	90105-068A0	35 - 15	90201-12688	28 - 6
54P-F4773-00-35	20 - 22	54P-F6301-30	24 - 18		37 - 47	54P-H3371-00	36 - 15	90105-08861	17 - 2	90201-14820	23 - 16
54P-F4773-00-P7	20 - 22	54P-F6351-00	24 - 21	2BJ-F832L-00	27 - 25	54P-H3509-00	31 - 6	90105-088E1	4 - 4	90201-154E8	11 - 11
5TL-F4780-00	20 - 16	54P-F6351-20	24 - 21		37 - 16	2BJ-H3510-00	31 - 1	90105-088E3	14 - 8	90201-15841	12 - 29
54P-F478E-00	20 - 21	54P-F637G-00	24 - 22	2BJ-F832L-10	27 - 25	54P-H3511-00	31 - 2	90105-10283	14 - 4	90201-20276	23 - 17
5TL-F4792-00	20 - 17	54P-F7111-10	26 - 1		37 - 32	2S0-H3516-00	30 - 3	90105-10896	24 - 3	90206-14093	23 - 13
54P-F5168-00-0X	21 - 1	54P-F7112-00	26 - 2	2BJ-F832L-20	27 - 25	32P-H3517-00	31 - 5	90109-06202	15 - 2	90208-12808	12 - 31
54P-F5168-00-1X	21 - 1	44D-F7114-00	14 - 6		37 - 48	4TE-H3517-00	31 - 4		15 - 7	90249-12008	24 - 28
3AY-F5181-01	21 - 8	4YY-F7114-00	26 - 16	2BJ-F8356-00	14 - 14	54P-H353F-00	31 - 3		20 - 8	90269-06811	35 - 13
54P-F518A-00	22 - 3	54P-F7114-00	24 - 23	2BJ-F835U-00-P0	27 - 15	54P-H3550-00	31 - 10	90109-06255	34 - 20	90269-06812	15 - 9
5TL-F5190-01	21 - 11	54P-F7121-00	9 - 4	2BJ-F835U-00-P1	27 - 15	54P-H3550-10	31 - 10	90109-06798	34 - 12		27 - 14
1LB-F530K-00	23 - 7	5LW-F7254-00	26 - 5	2BJ-F835V-00-P0	27 - 18	54P-H3591-00	36 - 8	90110-06868	1 - 20	90280-03017	2 - 9
54P-F5326-00	23 - 4	54P-F7267-00	26 - 6	2BJ-F835V-00-P1	27 - 18	5HH-H362Y-00	31 - 8	90111-06811	8 - 3	90340-12808	9 - 14
54P-F5338-20-0X	23 - 1	54P-F7311-00	26 - 11	54P-F8365-00	27 - 5	1LB-H3912-00	34 - 7	90111-08815	22 - 2	90380-15811	11 - 10
54P-F5338-20-1X	23 - 1	54P-F7430-00	26 - 17	54P-F8365-10	27 - 5	5TL-H3922-00	34 - 19	90116-08843	9 - 13	90387-05820	16 - 4
5MX-F533A-00	23 - 12	54P-F7431-00	26 - 18	44D-F8379-00	30 - 8	1LB-H3935-00	34 - 8	90119-06044	19 - 2		16 - 8
5MX-F531-00	23 - 10	54P-F7432-00	26 - 19	54P-F8385-00	27 - 9	5TL-H3955-20	34 - 2		26 - 9	90387-064W3	7 - 35
5LW-F5355-00	23 - 11	54P-F7440-00	26 - 25	2BJ-F838N-00	30 - 6	40D-H3962-00	34 - 10	90149-05801	1 - 11	90387-067V1	6 - 7
5P0-F5802-00	22 - 5	54P-F7441-00	26 - 26	2BJ-F838R-00	30 - 7	1LB-H3967-00	34 - 9	90149-10805	22 - 15	90387-06891	7 - 34
5YP-F5803-50	22 - 6	54P-F7442-00	26 - 27	54P-H1328-00	36 - 11	40D-H396X-00	34 - 11	90151-06811	10 - 10	90387-07828	27 - 7
3C1-F5805-10	22 - 10	54P-F7481-00	26 - 7	54P-H132G-00	28 - 5	1KP-H3973-00	34 - 1	90159-06054	20 - 20	90387-08820	26 - 13
54P-F580U-01	22 - 4	54P-F8100-00	20 - 25	54P-H1410-10	28 - 2	1KP-H3976-00	34 - 5	90159-06810	16 - 12	90387-08821	14 - 7
54P-F582U-00	22 - 1	2BJ-F8300-00	27 - 4	54P-H1450-00	28 - 1	1LB-H3980-00	34 - 14	90170-05803	3 - 9	90387-10837	21 - 7
5P0-F583T-03	25 - 4	2BJ-F8300-10	27 - 4	5TP-H1801-00	29 - 2	54P-H3980-00	34 - 22	90170-12800	12 - 32	90388-10800	14 - 11
5P0-F5852-00	25 - 7	2BJ-F8311-00-P0	27 - 1	5D9-H1828-00	29 - 4	2BJ-H4140-00	30 - 4	90175-06013	24 - 27	90388-10805	9 - 6
5P0-F5854-00	25 - 6	2BJ-F8311-00-P1	27 - 1	5D9-H1861-00	29 - 3	54P-H4140-00	32 - 3	90179-08518	1 - 15	90401-10812	25 - 2
5P0-F5855-00	25 - 10	2BJ-F831Y-00	27 - 26	54P-H1890-02	29 - 1	54P-H4310-01	32 - 1	90179-10803	12 - 35	90430-06014	1 - 5
5TL-F5867-01	25 - 9		37 - 12	5TP-H1940-00	35 - 16	5HV-H4314-00	32 - 2	90179-12004	28 - 7	90430-08119	9 - 3
14D-F5872-00	25 - 1	2BJ-F831Y-10	27 - 26	54P-H1960-00	35 - 14	3S0-H4374-00	32 - 4	90179-25002	18 - 31		9 - 17
28D-F5875-00	18 - 32		37 - 28	14D-H2100-00	35 - 1	2BJ-H454E-00	27 - 21	90183-05807	16 - 6	90430-10804	36 - 9
28D-F5876-00	18 - 33	2BJ-F831Y-20	27 - 26	14D-H2100-10	35 - 1	54P-H4704-00	33 - 5		16 - 10	90464-12810	35 - 12
5YP-F5917-00	22 - 7		37 - 44	54P-H2115-00	35 - 2	54P-H4704-10	33 - 6		20 - 9	90464-14808	36 - 6
5P0-F5919-00	22 - 12	2BJ-F832B-00	27 - 27	54P-H2116-00	35 - 5	54P-H4710-10	33 - 1		24 - 7	90464-16801	34 - 18
5YP-F5924-00	22 - 13		37 - 13	54P-H2129-00	20 - 10	4AC-H4714-00	33 - 2		24 - 11	90467-110A3	10 - 5
5YP-F5925-01	22 - 11	2BJ-F832B-10	27 - 27	54P-H2151-00	35 - 3	54P-H4743-10	33 - 4		26 - 8	90467-12809	7 - 32
5YP-F5937-00	22 - 8		37 - 29	1KP-H2176-00	20 - 6	54P-H5130-00	36 - 17		27 - 2	90467-13858	7 - 40
5YP-F5939-00	22 - 14	2BJ-F832B-20	27 - 27	54P-H2310-10	36 - 4	54P-H5546-00	36 - 2		27 - 16		7 - 41
54P-F6110-00	24 - 1		37 - 45	1KP-H2316-00	36 - 12	54P-H591A-10	36 - 1		27 - 19	90467-15804	7 - 21
54P-F6143-10-P6	24 - 5	2BJ-F832C-00	27 - 28	54P-H2370-00	36 - 7	54P-H592A-00	36 - 10		30 - 9		7 - 22
54P-F6145-00	24 - 9		37 - 14	1LB-H2556-00	34 - 15	5P0-W0041-00	25 - 5		33 - 8	90480-13013	7 - 36
54P-F6145-10	24 - 9	2BJ-F832C-10	27 - 28	2BJ-H2590-00	35 - 10	4C9-W0048-00	22 - 9	90185-10011	24 - 4	90501-12743	26 - 20
44D-F6240-00	24 - 13		37 - 30	2BJ-H2590-10	35 - 10	54P-WF445-10	7 - 26	90185-10811	21 - 9		26 - 28
44D-F6241-00	24 - 14	2BJ-F832C-20	27 - 28	54P-H2599-00	36 - 3	2BJ-WF070-00	37 - 1	90185-14814	23 - 15	90501-16003	24 - 26
54P-F6246-00	24 - 15		37 - 46	1LB-H2911-00	34 - 6	2BJ-WF070-10	37 - 17	90201-05817	8 - 4	90501-16004	5 - 6
54P-F6280-00	24 - 16	2BJ-F832K-00	27 - 24	2BJ-H3310-00	30 - 1	2BJ-WF070-20	37 - 33	90201-10065	17 - 5	90506-12001	23 - 8
54P-F6281-00	24 - 29		37 - 15	5HV-H3311-00	30 - 2	54P-XH252-00	35 - 6	90201-10118	25 - 3	90506-15001	23 - 9
54P-F6282-00	24 - 30	2BJ-F832K-10	27 - 24		33 - 3	90101-06046	23 - 14	90201-10831	21 - 10	90506-20514	26 - 15
54P-F6290-00	24 - 17		37 - 31	5D9-H3350-00	36 - 14	90101-08847	26 - 12	90201-12028	17 - 4	90506-35821	26 - 4

NUMERICAL INDEX

PART NO.	REF. NO.	PART NO.	REF. NO.	PART NO.	REF. NO.	PART NO.	REF. NO.	PART NO.	REF. NO.	PART NO.	REF. NO.
90508-32768	11 - 9	93211-37803	9 - 32	95302-10600	17 - 3	97707-50016	27 - 11				
90520-03806	20 - 7	93306-002YS	4 - 2	9530N-03600	31 - 7		27 - 13				
	20 - 11	93306-002YW	4 - 2	95602-06100	34 - 13		27 - 17				
90520-03810	20 - 24	93306-006Y5	12 - 36		34 - 21		27 - 20				
90520-05810	6 - 8	93306-006Y7	12 - 36	95602-08200	14 - 9		30 - 10				
90520-08806	15 - 6	93306-054X9	13 - 6		26 - 14		30 - 11				
90520-08807	27 - 3	93306-253Y3	13 - 9	95602-10200	14 - 5		31 - 9				
90520-10811	10 - 19	93306-253Y9	12 - 5		14 - 13		33 - 9				
90520-15806	10 - 26	93306-300YL	21 - 4	95612-08618	1 - 6		34 - 4				
90520-20806	24 - 6	93306-301XT	13 - 2	95702-06500	20 - 15	97707-50020	6 - 6				
90560-10292	21 - 2		13 - 3		20 - 18	98502-05010	34 - 16				
91312-05010	19 - 10	93306-372X2	2 - 7	95702-08500	8 - 6	98502-05020	5 - 3				
91312-06010	12 - 3	93306-804Y3	11 - 2	95702-10500	23 - 5	98502-05025	24 - 31				
91312-06012	4 - 9	93306-804Y4	11 - 2	95802-06010	14 - 15	98502-06016	28 - 4				
91312-06014	35 - 8	93306-804Y6	11 - 2		18 - 34	98902-05008	35 - 4				
91312-06018	28 - 3	93310-528Y8	2 - 3		18 - 36	98907-06012	27 - 6				
91312-06020	29 - 5	93440-10085	1 - 3		32 - 5	99002-08600	26 - 3				
	34 - 17	93450-14088	2 - 12		36 - 16	99009-15400	11 - 12				
91312-06025	11 - 15	93450-32837	11 - 3	95802-06030	27 - 22	99009-17400	12 - 4				
	25 - 11	93501-04843	26 - 21	95802-08030	26 - 24	99480-05010	9 - 27				
91401-25015	26 - 23		26 - 29		26 - 32						
	26 - 31	94107-14802	21 - 5	95812-06025	7 - 15						
91701-08035	26 - 22	94108-14802	23 - 2		7 - 38						
	26 - 30	94207-14802	21 - 6	95812-06030	1 - 12						
91810-14809	1 - 18	94208-14802	23 - 3	95812-06035	7 - 6						
	1 - 19	94568-F9090	4 - 6	95812-06050	7 - 7						
	9 - 10	94700-00880	1 - 16	95812-08016	9 - 16						
	9 - 33	94700-00895	1 - 16	95812-08045	8 - 7						
	9 - 38	95022-06010	1 - 4	95822-06016	6 - 15						
	10 - 12		10 - 8		20 - 23						
92012-05010	24 - 20		19 - 5	95822-06020	10 - 24						
92012-05016	24 - 19		36 - 13	95822-06090	10 - 23						
92902-06600	35 - 9	95022-06012	35 - 11	97602-05208	35 - 7						
93102-15801	11 - 13	95022-06014	24 - 25	97602-05216	34 - 3						
93102-17803	12 - 6	95022-06016	9 - 29	97602-06220	6 - 11						
93102-19814	9 - 24	95022-06020	4 - 13	97702-50025	7 - 33						
93102-25816	9 - 31		36 - 5	97702-60530	6 - 12						
93102-26809	13 - 7	95022-06025	9 - 34	97707-04616	33 - 7						
93106-20816	21 - 3	95022-06035	9 - 35	97707-50012	20 - 12						
93210-07802	23 - 6		9 - 39	97707-50016	15 - 8						
93210-148H8	9 - 19		10 - 13		16 - 2						
93210-16805	12 - 28	95022-06040	24 - 24		16 - 5						
93210-258G2	12 - 34	95022-06045	10 - 14		16 - 9						
93210-29800	5 - 7	95022-06060	9 - 11		24 - 2						
93210-29803	29 - 6	95022-06070	9 - 12		24 - 8						
93210-30611	7 - 4		9 - 28		24 - 12						
93210-84800	6 - 14	95022-06080	10 - 15		26 - 10						
93211-07800	9 - 25	95022-08012	9 - 2		27 - 8						